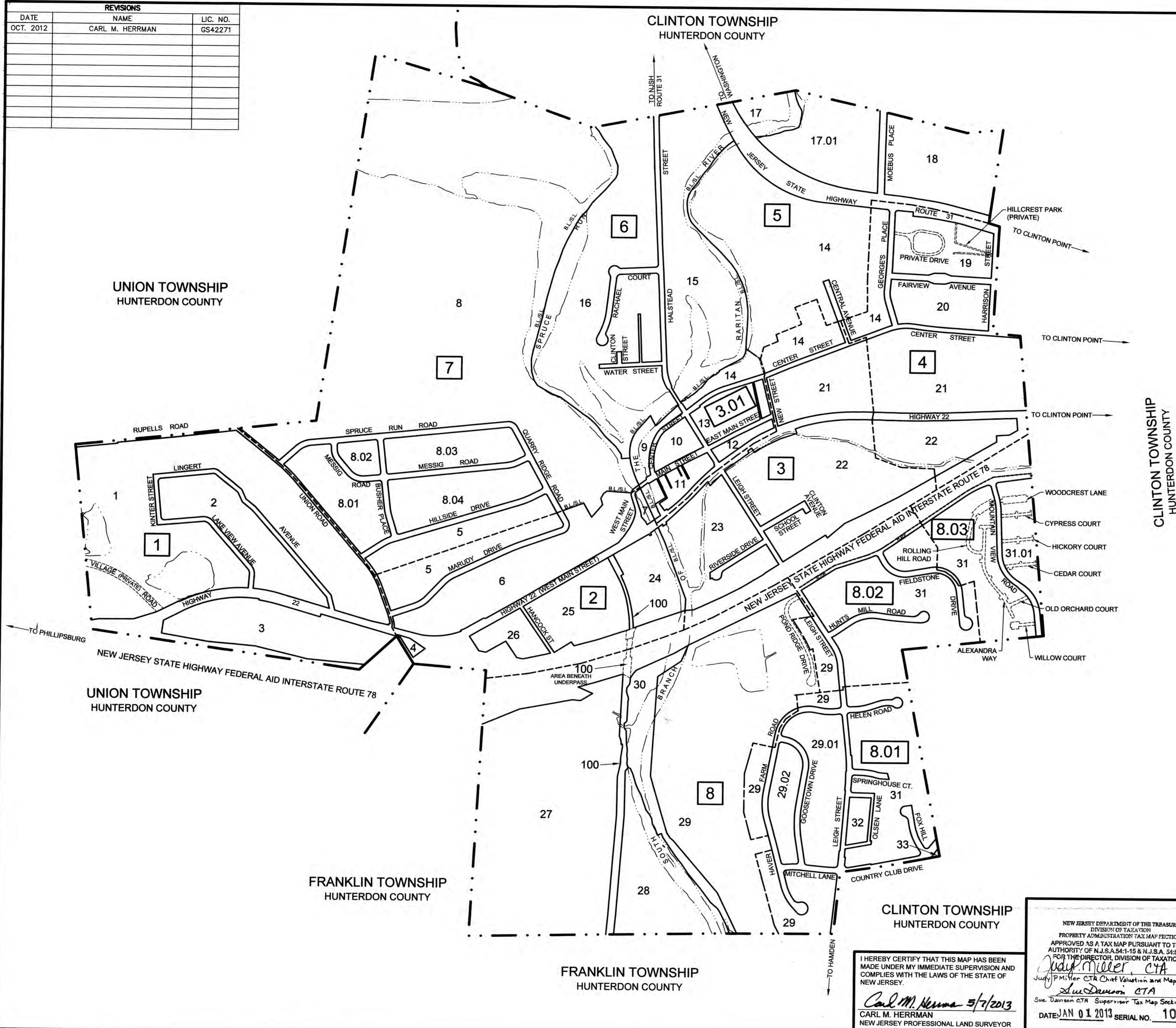


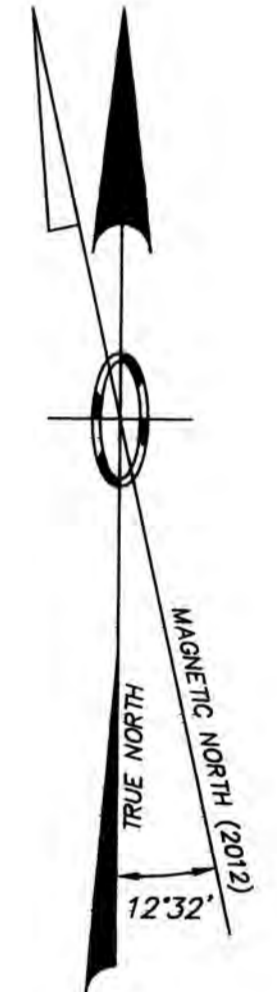
KEY MAP

| REVISIONS | | |
|-----------|-----------------|----------|
| DATE | NAME | LIC. NO. |
| OCT. 2012 | CARL M. HERRMAN | GS42271 |
| | | |
| | | |
| | | |
| | | |
| | | |
| | | |
| | | |

- LEGEND**
- KEY SHEET**
- 1 SHEET NUMBER
 - 1 BLOCK NUMBER
 - SHEET LIMIT LINE
 - BLOCK LIMIT LINE
 - B.L.S.L. BLOCK LIMIT & SHEET LIMIT LINE
 - . - . - MUNICIPAL BOUNDARY LINE
 - STREAM & WATER LINES
- DETAIL SHEET**
- 1 BLOCK NUMBER
 - 1 LOT NUMBER



CLINTON TOWNSHIP
HUNTERDON COUNTY



NOTES:

THE AREAS, BOUNDARIES AND DIMENSIONS SHOWN ON THIS TAX MAP ARE DERIVED FROM GROUND SURVEYS, AERIAL SURVEYS AND RECORDED PLANS, MAPS, DEEDS AND WILLS AND ARE TO BE USED FOR ASSESSMENT PURPOSES ONLY.

THIS MAP HAS BEEN REDRAWN USING COMPUTER AIDED DRAFTING /DESIGN (CAD/D) BASED ON THE MAP PREPARED BY ROBERT McELDOONEY JR. PROFESSIONAL ENGINEER & LAND SURVEYOR DATED MARCH, 1962.

THIS TAX MAP SUPERCEDES THE TAX MAP APPROVED DECEMBER 3, 1962, SERIAL NUMBER 375.

I HEREBY CERTIFY THAT THIS MAP HAS BEEN MADE UNDER MY IMMEDIATE SUPERVISION AND COMPLIES WITH THE LAWS OF THE STATE OF NEW JERSEY.

Carl M. Herrman 5/7/2013
CARL M. HERRMAN
 NEW JERSEY PROFESSIONAL LAND SURVEYOR
 NJ LICENSE No. GS42271

NEW JERSEY DEPARTMENT OF THE TREASURY
 DIVISION OF TAXATION
 PROPERTY ADMINISTRATION TAX MAP SECTION
 APPROVED AS A TAX MAP PURSUANT TO THE AUTHORITY OF N.J.S.A. 54:1-15 & N.J.S.A. 54:50-1 FOR THE DIRECTOR, DIVISION OF TAXATION

Judy P. Miller CTA
Sue Davison CTA
 Judy P. Miller CTA Chief Valuation and Mapping
 Sue Davison CTA Supervisor Tax Map Section
 DATE: JAN 01 2013 SERIAL NO. 1017

TAX MAP
TOWN OF CLINTON
 HUNTERDON COUNTY, NEW JERSEY
 SCALE: 1" = 400' AUGUST 2012

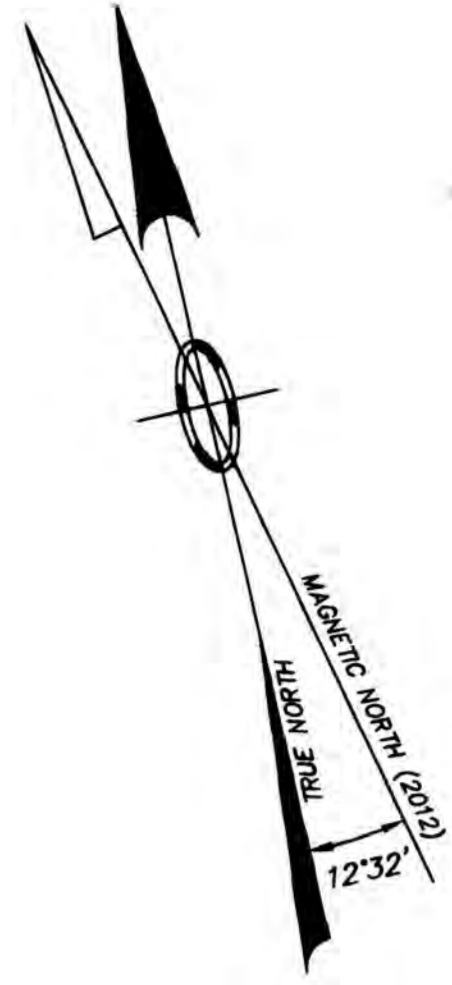
PREPARED BY:
CARL M. HERRMAN, P.L.S.
VAN CLEEF ENGINEERING ASSOCIATES
 1128 ROUTE 31
 LEBANON, NEW JERSEY

NOTE: TO SHOW CONDITIONS AS OF OCTOBER 2012

| REVISIONS | | |
|-----------|-----------------|----------|
| DATE | NAME | LIC. NO. |
| OCT. 2012 | CARL M. HERRMAN | GS42271 |
| | | |
| | | |
| | | |
| | | |
| | | |
| | | |
| | | |
| | | |

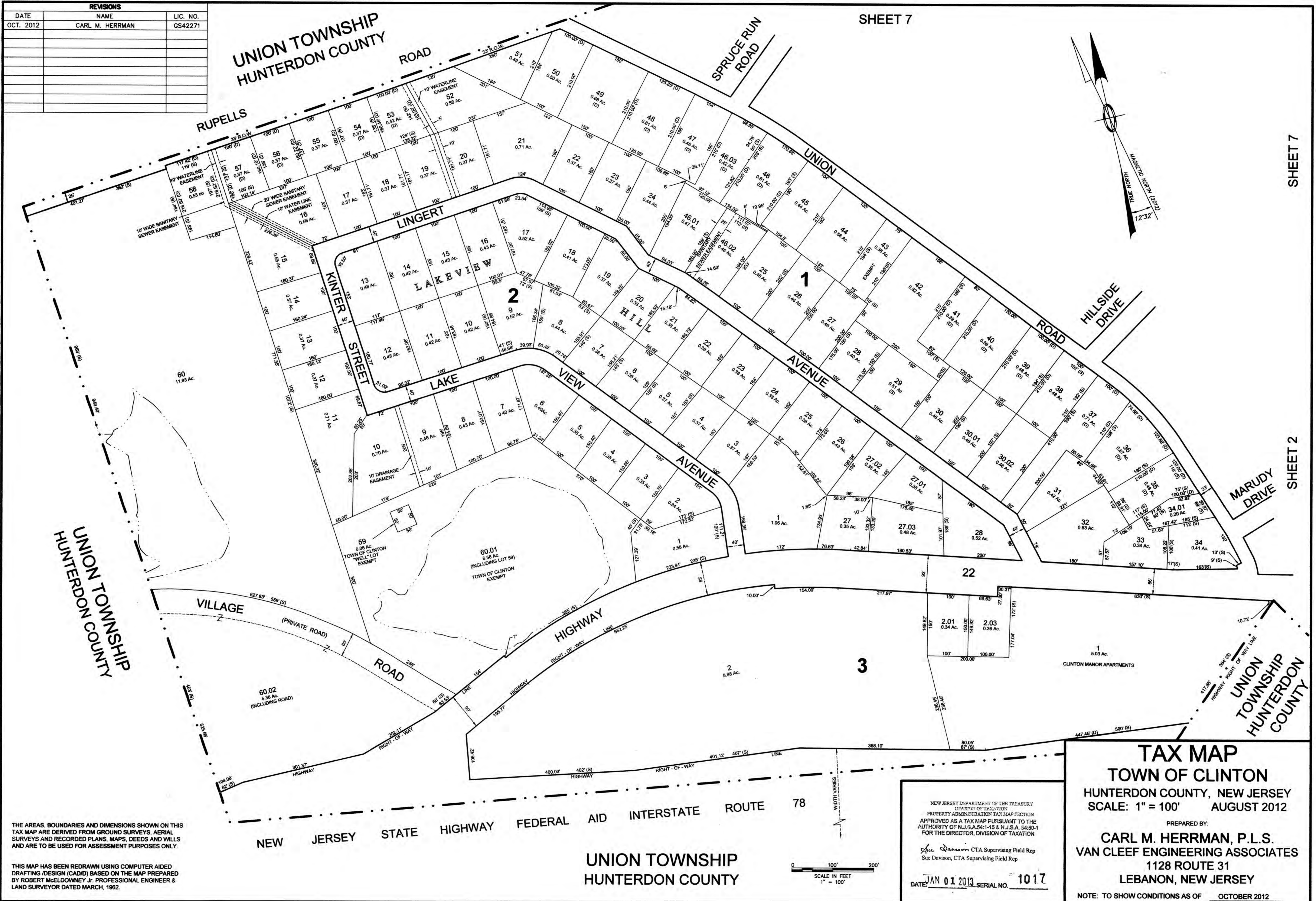
UNION TOWNSHIP
HUNTERDON COUNTY

SHEET 7



SHEET 7

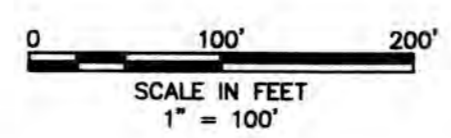
SHEET 2



THE AREAS, BOUNDARIES AND DIMENSIONS SHOWN ON THIS TAX MAP ARE DERIVED FROM GROUND SURVEYS, AERIAL SURVEYS AND RECORDED PLANS, MAPS, DEEDS AND WILLS AND ARE TO BE USED FOR ASSESSMENT PURPOSES ONLY.

THIS MAP HAS BEEN REDRAWN USING COMPUTER AIDED DRAFTING /DESIGN (CAD/D) BASED ON THE MAP PREPARED BY ROBERT McELDOWNEY JR. PROFESSIONAL ENGINEER & LAND SURVEYOR DATED MARCH, 1962.

UNION TOWNSHIP
HUNTERDON COUNTY



NEW JERSEY DEPARTMENT OF THE TREASURY
DIVISION OF TAXATION
PROPERTY ADMINISTRATION TAX MAP SECTION
APPROVED AS A TAX MAP PURSUANT TO THE
AUTHORITY OF N.J.S.A. 54:1-15 & N.J.S.A. 54:50-1
FOR THE DIRECTOR, DIVISION OF TAXATION

Sue Davison, CTA Supervising Field Rep
Sue Davison, CTA Supervising Field Rep

DATE: JAN 01 2013 SERIAL NO. 1017

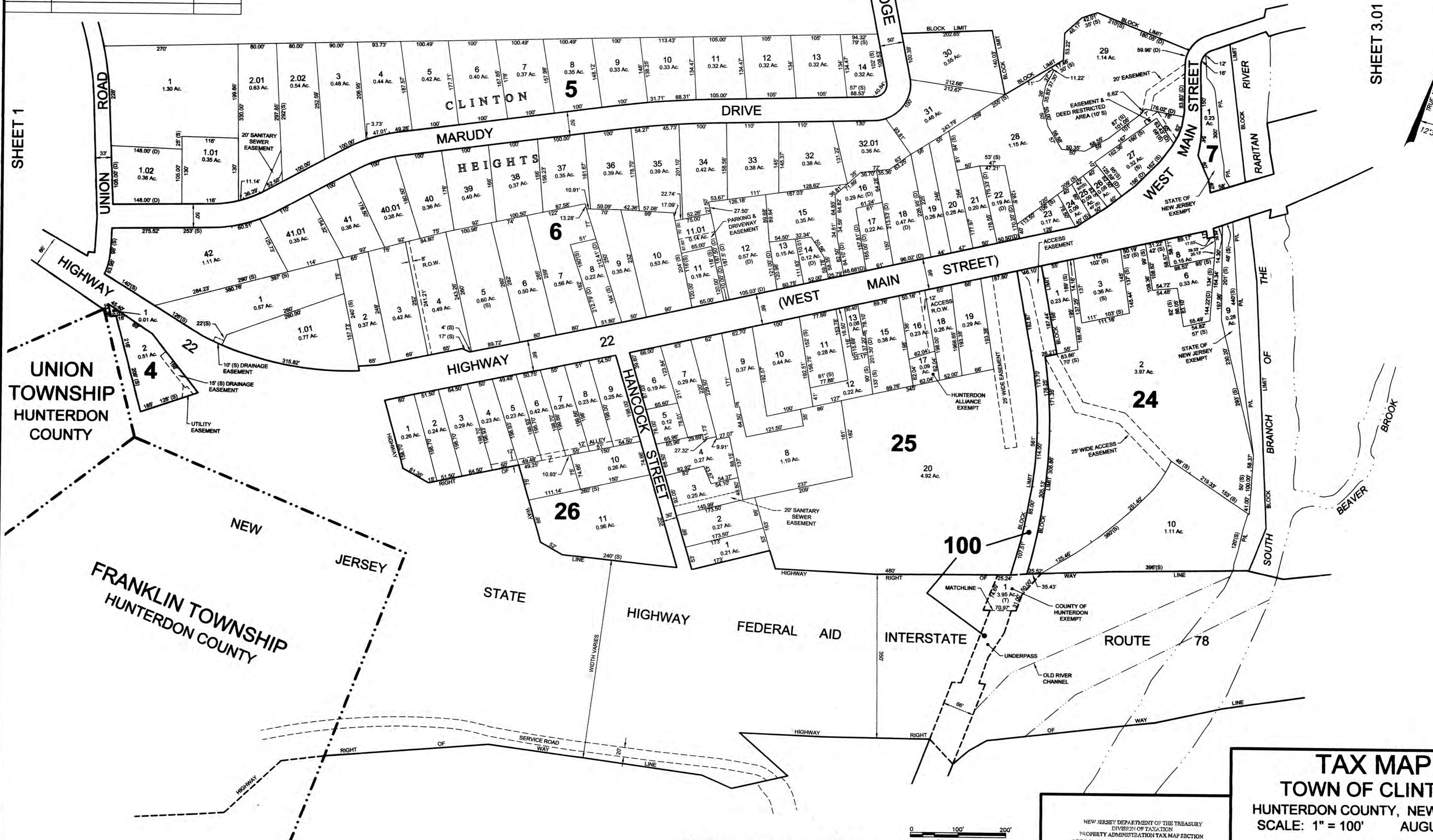
TAX MAP
TOWN OF CLINTON
HUNTERDON COUNTY, NEW JERSEY
SCALE: 1" = 100' AUGUST 2012

PREPARED BY:
CARL M. HERRMAN, P.L.S.
VAN CLEEF ENGINEERING ASSOCIATES
1128 ROUTE 31
LEBANON, NEW JERSEY

NOTE: TO SHOW CONDITIONS AS OF OCTOBER 2012

| REVISIONS | | |
|-----------|-----------------|----------|
| DATE | NAME | LIC. NO. |
| OCT. 2012 | CARL M. HERRMAN | GS42271 |
| | | |
| | | |
| | | |
| | | |
| | | |
| | | |

SHEET 7



SHEET 1

SHEET 3.01

SHEET 3

UNION TOWNSHIP
HUNTERDON COUNTY

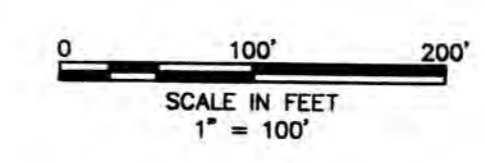
FRANKLIN TOWNSHIP
HUNTERDON COUNTY

NEW JERSEY

HUNTERDON COUNTY

THE AREAS, BOUNDARIES AND DIMENSIONS SHOWN ON THIS TAX MAP ARE DERIVED FROM GROUND SURVEYS, AERIAL SURVEYS AND RECORDED PLANS, MAPS, DEEDS AND WILLS AND ARE TO BE USED FOR ASSESSMENT PURPOSES ONLY.

THIS MAP HAS BEEN REDRAWN USING COMPUTER AIDED DRAFTING /DESIGN (CAD/D) BASED ON THE MAP PREPARED BY ROBERT McELDOWNEY Jr. PROFESSIONAL ENGINEER & LAND SURVEYOR DATED MARCH, 1962.



NEW JERSEY DEPARTMENT OF THE TREASURY
DIVISION OF TAXATION
PROPERTY ADMINISTRATION TAX MAP SECTION
APPROVED AS A TAX MAP PURSUANT TO THE AUTHORITY OF N.J.S.A.54:1-15 & N.J.S.A. 54:50-1 FOR THE DIRECTOR, DIVISION OF TAXATION

Sue Dawson CTA Supervising Field Rep
Sue Dawson, CTA Supervising Field Rep

DATE: JAN 01 2013 SERIAL NO. 1017

TAX MAP
TOWN OF CLINTON
HUNTERDON COUNTY, NEW JERSEY
SCALE: 1" = 100' AUGUST 2012

PREPARED BY:
CARL M. HERRMAN, P.L.S.
VAN CLEEF ENGINEERING ASSOCIATES
1128 ROUTE 31
LEBANON, NEW JERSEY

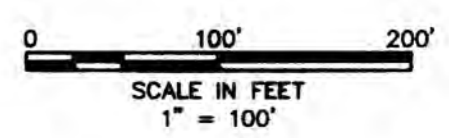
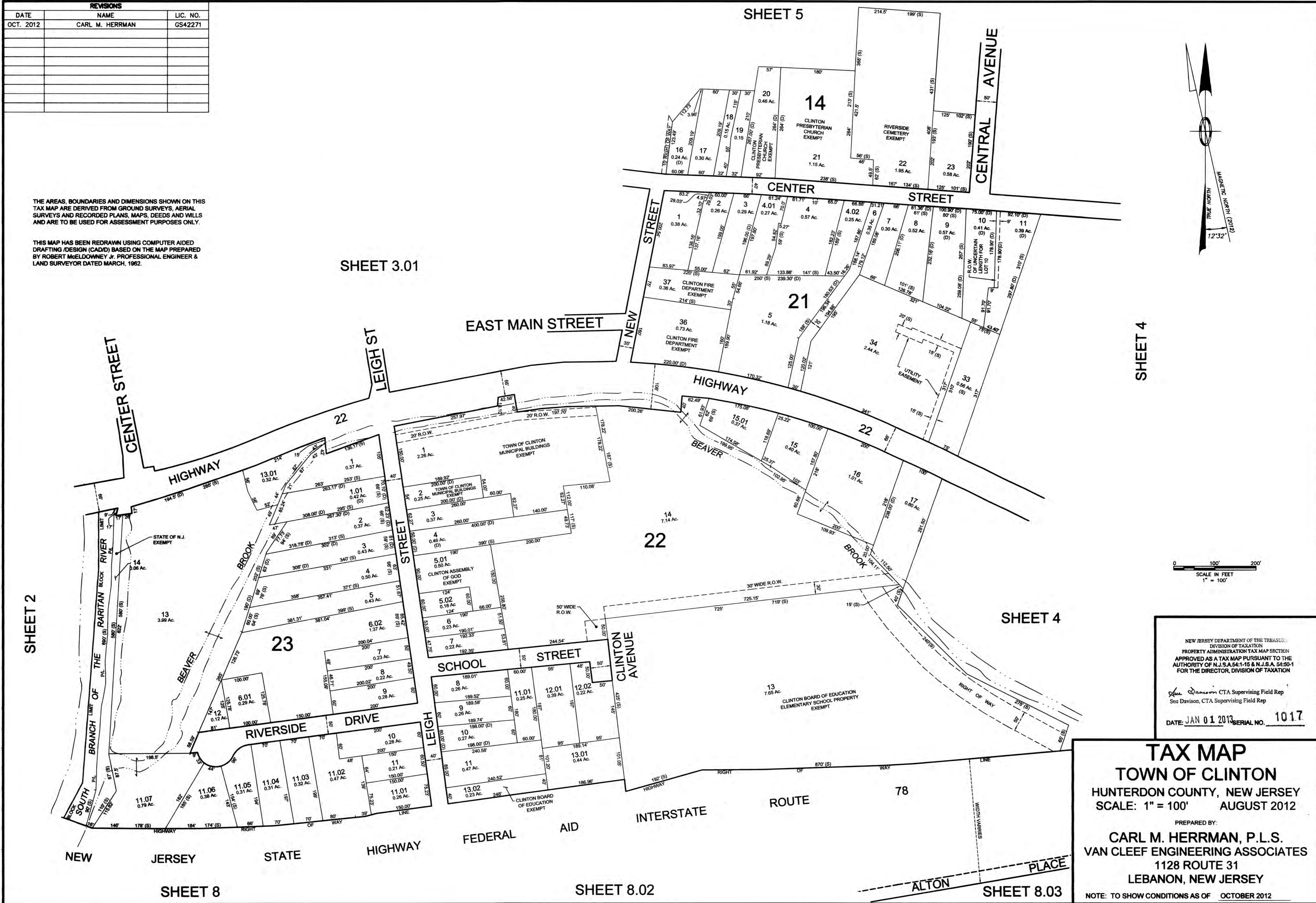
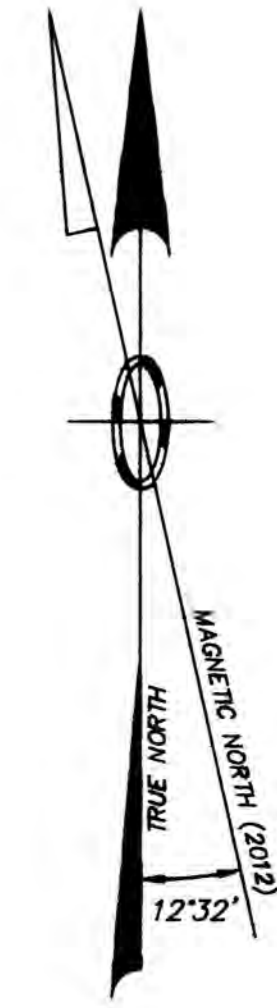
NOTE: TO SHOW CONDITIONS AS OF OCTOBER 2012

SHEET 8

| REVISIONS | | |
|-----------|-----------------|----------|
| DATE | NAME | L.C. NO. |
| OCT. 2012 | CARL M. HERRMAN | GS42271 |
| | | |
| | | |
| | | |
| | | |
| | | |
| | | |
| | | |
| | | |

THE AREAS, BOUNDARIES AND DIMENSIONS SHOWN ON THIS TAX MAP ARE DERIVED FROM GROUND SURVEYS, AERIAL SURVEYS AND RECORDED PLANS, MAPS, DEEDS AND WILLS AND ARE TO BE USED FOR ASSESSMENT PURPOSES ONLY.

THIS MAP HAS BEEN REDRAWN USING COMPUTER AIDED DRAFTING /DESIGN (CAD/D) BASED ON THE MAP PREPARED BY ROBERT McELDOWNEY Jr. PROFESSIONAL ENGINEER & LAND SURVEYOR DATED MARCH, 1962.



NEW JERSEY DEPARTMENT OF THE TREASURY
 DIVISION OF TAXATION
 PROPERTY ADMINISTRATION TAX MAP SECTION
 APPROVED AS A TAX MAP PURSUANT TO THE
 AUTHORITY OF N.J.S.A.54:1-15 & N.J.S.A. 54:50-1
 FOR THE DIRECTOR, DIVISION OF TAXATION

See Davison CTA Supervising Field Rep
 See Davison, CTA Supervising Field Rep

DATE: JAN 01 2013 SERIAL NO. 1017

TAX MAP
TOWN OF CLINTON
 HUNTERDON COUNTY, NEW JERSEY
 SCALE: 1" = 100' AUGUST 2012

PREPARED BY:
CARL M. HERRMAN, P.L.S.
VAN CLEEF ENGINEERING ASSOCIATES
 1128 ROUTE 31
 LEBANON, NEW JERSEY

NOTE: TO SHOW CONDITIONS AS OF OCTOBER 2012

| REVISIONS | | |
|-----------|-----------------|----------|
| DATE | NAME | LIC. NO. |
| OCT. 2012 | CARL M. HERRMAN | GS42271 |
| | | |
| | | |
| | | |
| | | |
| | | |
| | | |

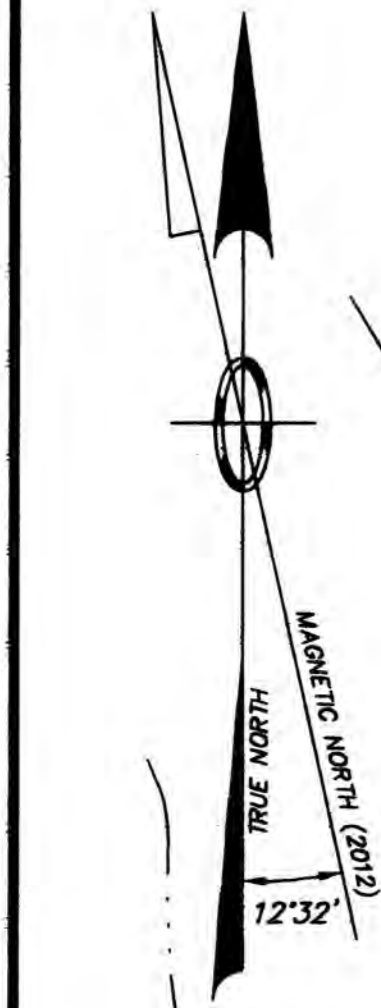
SHEET 6

SHEET 6

SHEET 5

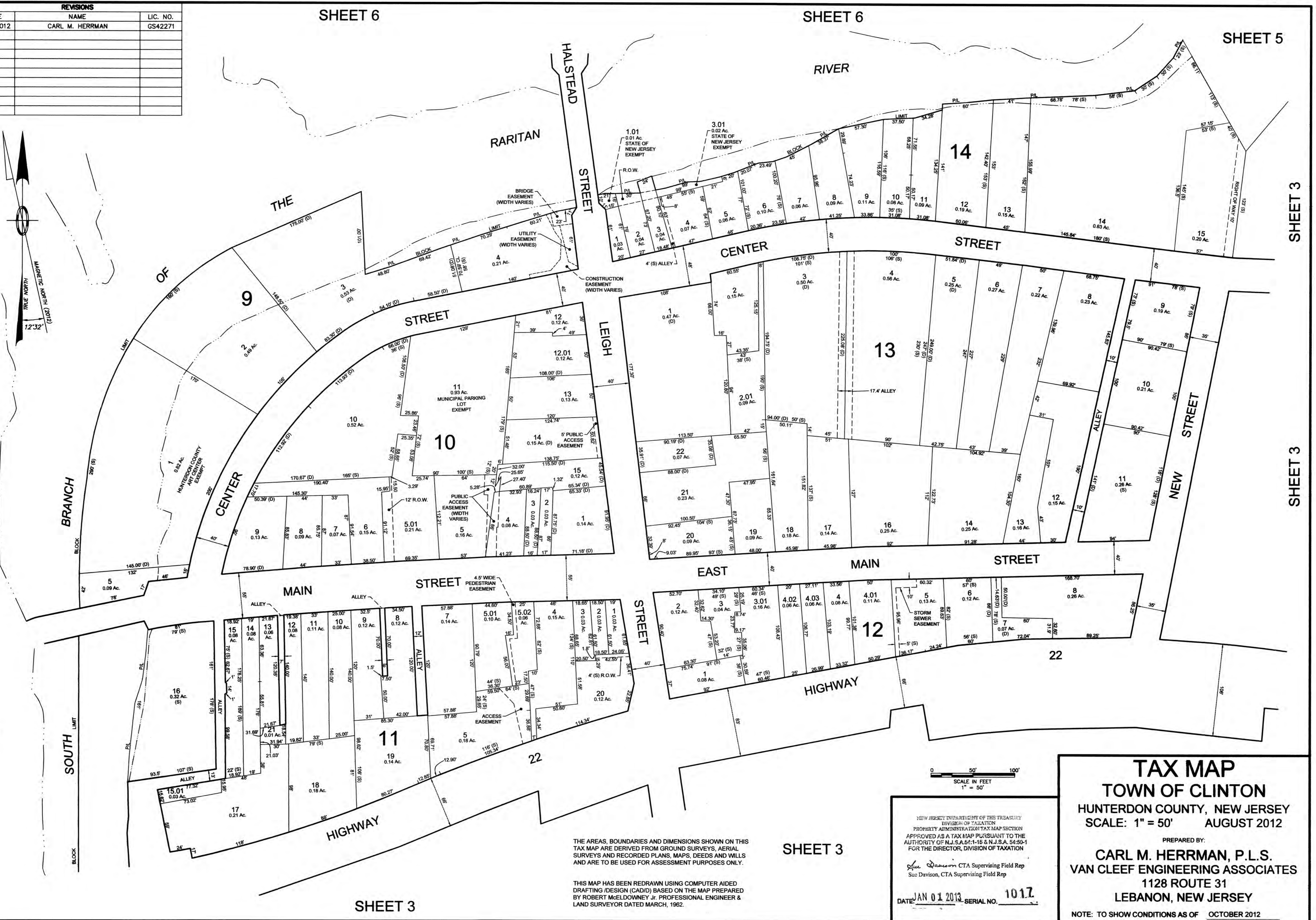
SHEET 3

SHEET 3



SHEET 7

SHEET 2

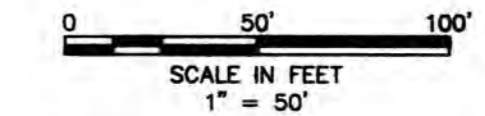


SHEET 3

SHEET 3

THE AREAS, BOUNDARIES AND DIMENSIONS SHOWN ON THIS TAX MAP ARE DERIVED FROM GROUND SURVEYS, AERIAL SURVEYS AND RECORDED PLANS, MAPS, DEEDS AND WILLS AND ARE TO BE USED FOR ASSESSMENT PURPOSES ONLY.

THIS MAP HAS BEEN REDRAWN USING COMPUTER AIDED DRAFTING /DESIGN (CAD/D) BASED ON THE MAP PREPARED BY ROBERT McELDOWNEY JR. PROFESSIONAL ENGINEER & LAND SURVEYOR DATED MARCH, 1982.



NEW JERSEY DEPARTMENT OF THE TREASURY
 DIVISION OF TAXATION
 PROPERTY ADMINISTRATION TAX MAP SECTION
 APPROVED AS A TAX MAP PURSUANT TO THE
 AUTHORITY OF N.J.S.A. 54:1-16 & N.J.S.A. 54:50-1
 FOR THE DIRECTOR, DIVISION OF TAXATION

See Davison CTA Supervising Field Rep
 Sue Davison, CTA Supervising Field Rep

DATE: JAN 01 2013 SERIAL NO. 1017

TAX MAP
TOWN OF CLINTON
 HUNTERDON COUNTY, NEW JERSEY
 SCALE: 1" = 50' AUGUST 2012

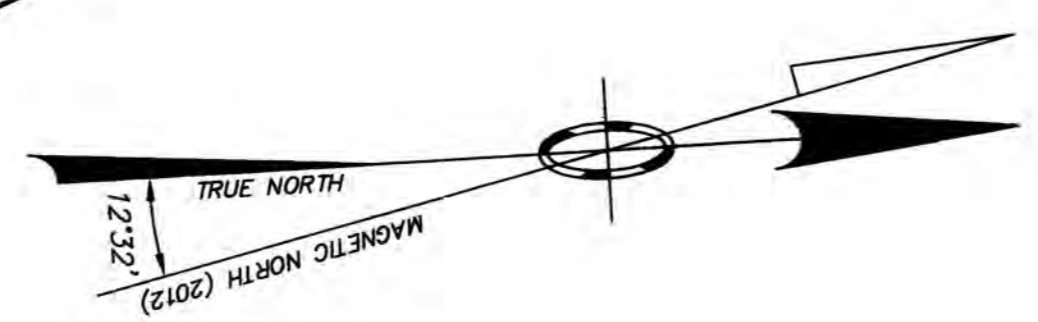
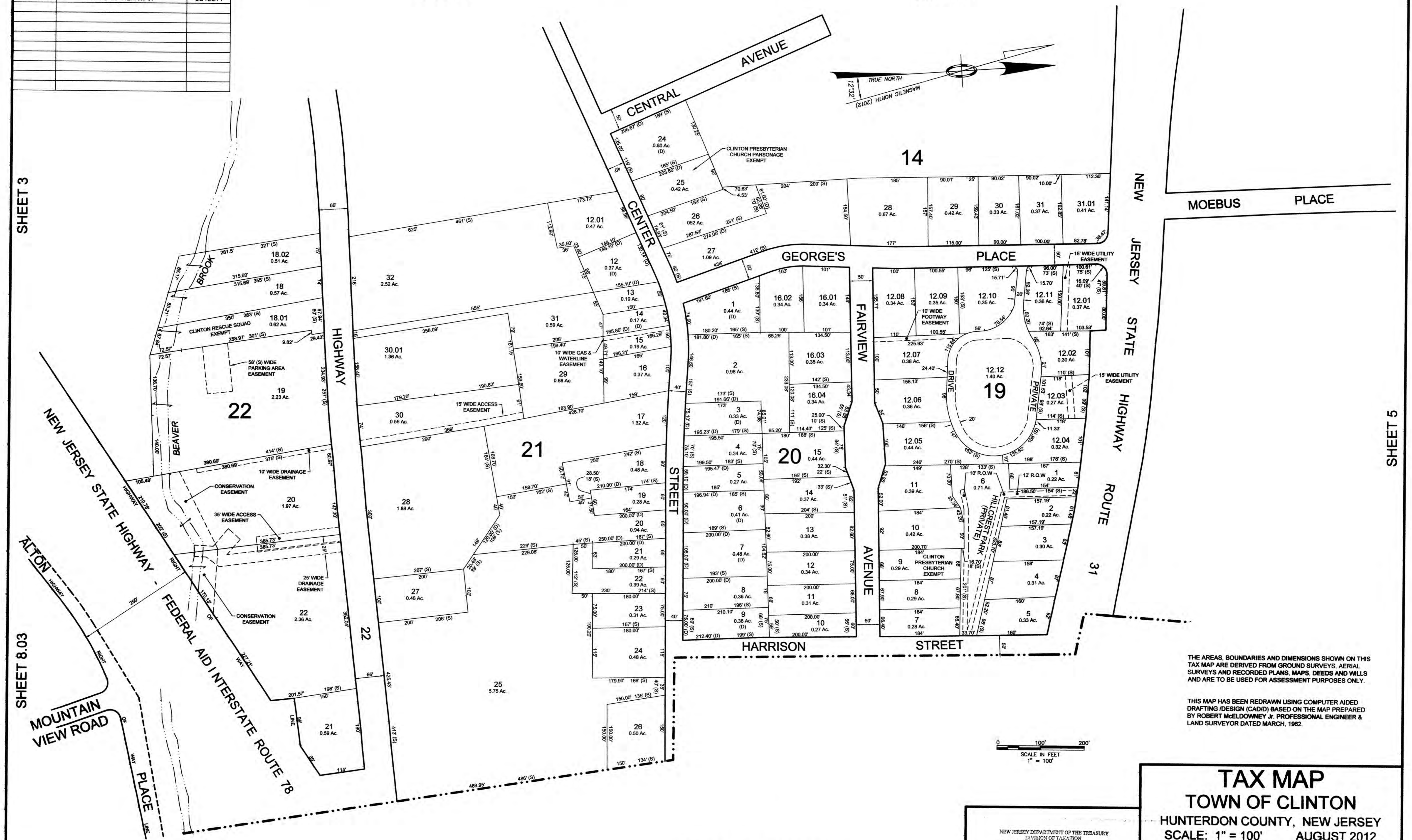
PREPARED BY:
CARL M. HERRMAN, P.L.S.
VAN CLEEF ENGINEERING ASSOCIATES
 1128 ROUTE 31
 LEBANON, NEW JERSEY

NOTE: TO SHOW CONDITIONS AS OF OCTOBER 2012

| REVISIONS | | |
|-----------|-----------------|----------|
| DATE | NAME | LIC. NO. |
| OCT. 2012 | CARL M. HERRMAN | GS42271 |
| | | |
| | | |
| | | |
| | | |
| | | |
| | | |
| | | |
| | | |

SHEET 3

SHEET 5



MOEBUS PLACE

NEW JERSEY STATE HIGHWAY ROUTE 31

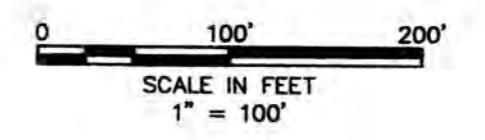
SHEET 3

SHEET 8.03

SHEET 5

THE AREAS, BOUNDARIES AND DIMENSIONS SHOWN ON THIS TAX MAP ARE DERIVED FROM GROUND SURVEYS, AERIAL SURVEYS AND RECORDED PLANS, MAPS, DEEDS AND WILLS AND ARE TO BE USED FOR ASSESSMENT PURPOSES ONLY.

THIS MAP HAS BEEN REDRAWN USING COMPUTER AIDED DRAFTING /DESIGN (CAD/D) BASED ON THE MAP PREPARED BY ROBERT McELDOWNEY Jr., PROFESSIONAL ENGINEER & LAND SURVEYOR DATED MARCH, 1962.



CLINTON TOWNSHIP
HUNTERDON COUNTY

NEW JERSEY DEPARTMENT OF THE TREASURY
DIVISION OF TAXATION
PROPERTY ADMINISTRATION TAX MAP SECTION
APPROVED AS A TAX MAP PURSUANT TO THE
AUTHORITY OF N.J.S.A. 54:1-15 & N.J.S.A. 54:50-1
FOR THE DIRECTOR, DIVISION OF TAXATION

Sue Davison, CTA Supervising Field Rep
Sue Davison, CTA Supervising Field Rep

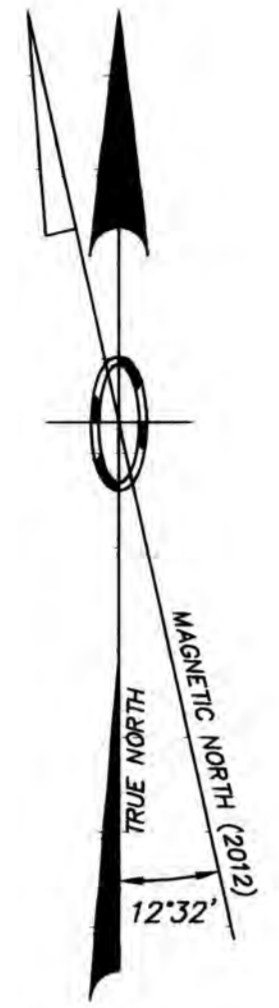
DATE: JAN 01 2013 SERIAL NO. 1017

TAX MAP
TOWN OF CLINTON
HUNTERDON COUNTY, NEW JERSEY
SCALE: 1" = 100' AUGUST 2012

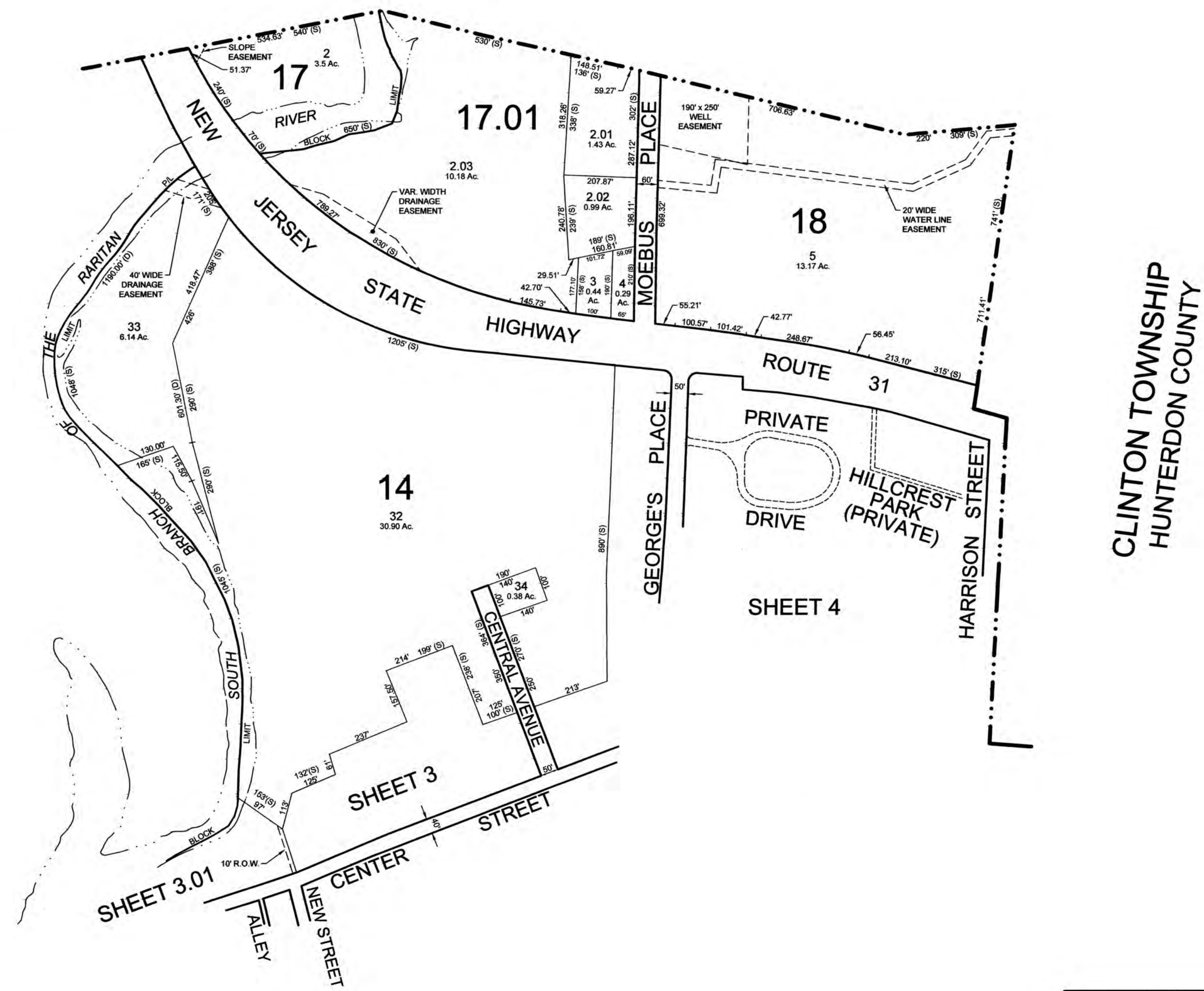
PREPARED BY:
CARL M. HERRMAN, P.L.S.
VAN CLEEF ENGINEERING ASSOCIATES
1128 ROUTE 31
LEBANON, NEW JERSEY

NOTE: TO SHOW CONDITIONS AS OF OCTOBER 2012

| REVISIONS | | |
|-----------|-----------------|----------|
| DATE | NAME | LIC. NO. |
| OCT. 2012 | CARL M. HERRMAN | GS42271 |
| | | |
| | | |
| | | |
| | | |
| | | |
| | | |

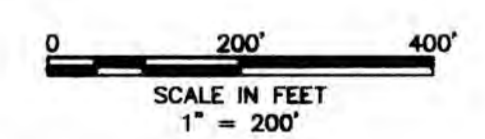


CLINTON TOWNSHIP
HUNTERDON COUNTY



SHEET 6

CLINTON TOWNSHIP
HUNTERDON COUNTY



TAX MAP
TOWN OF CLINTON
HUNTERDON COUNTY, NEW JERSEY
SCALE: 1" = 200' AUGUST 2012

PREPARED BY:
CARL M. HERRMAN, P.L.S.
VAN CLEEF ENGINEERING ASSOCIATES
1128 ROUTE 31
LEBANON, NEW JERSEY

NOTE: TO SHOW CONDITIONS AS OF OCTOBER 2012

NEW JERSEY DEPARTMENT OF THE TREASURY
DIVISION OF TAXATION
PROPERTY ADMINISTRATION TAX MAP SECTION
APPROVED AS A TAX MAP PURSUANT TO THE
AUTHORITY OF N.J.S.A. 54:1-15 & N.J.S.A. 54:2-1
OR THE DIRECTOR, DIVISION OF TAXATION

Sue Davison CTA Supervising Field Rep
Sue Davison, CTA Supervising Field Rep

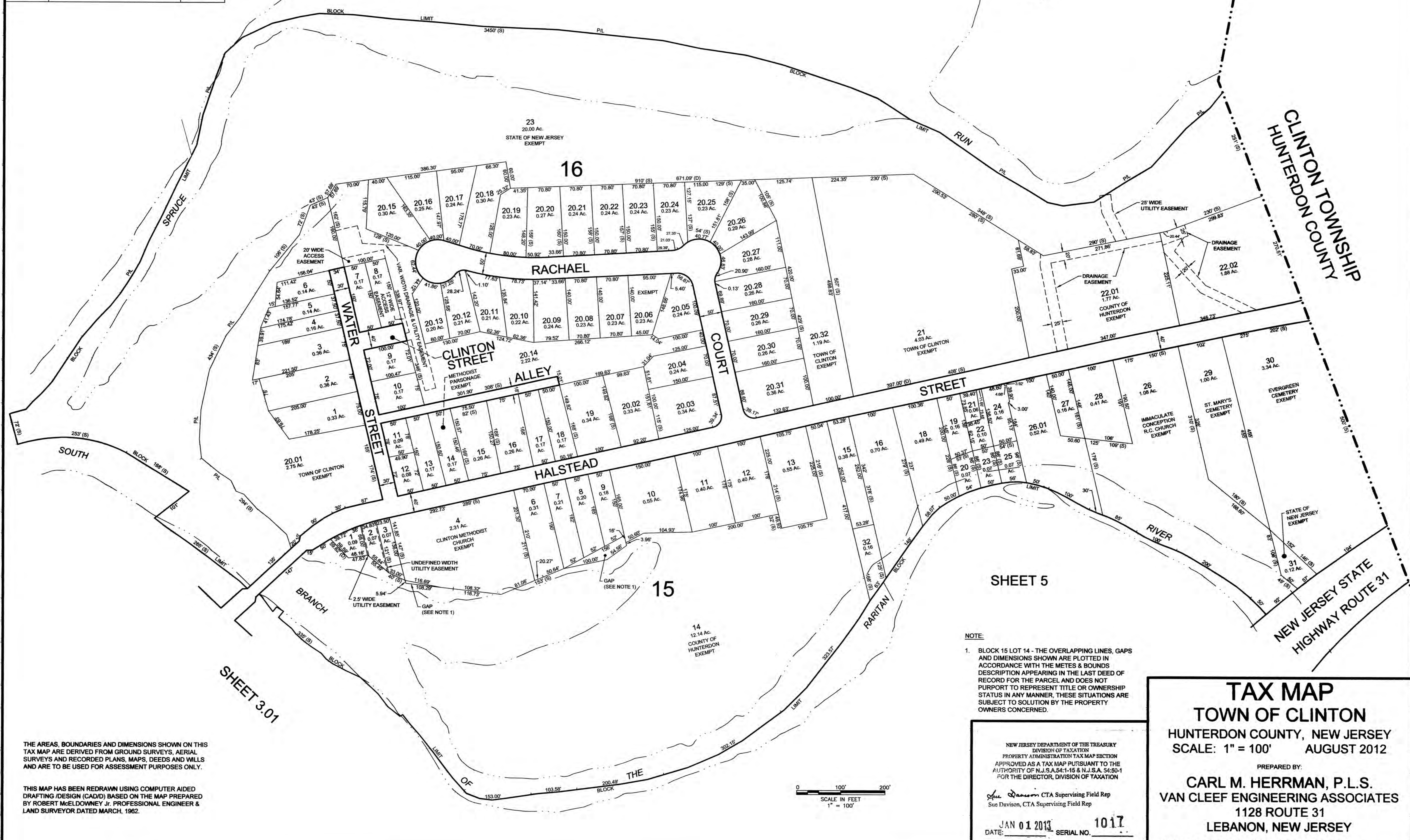
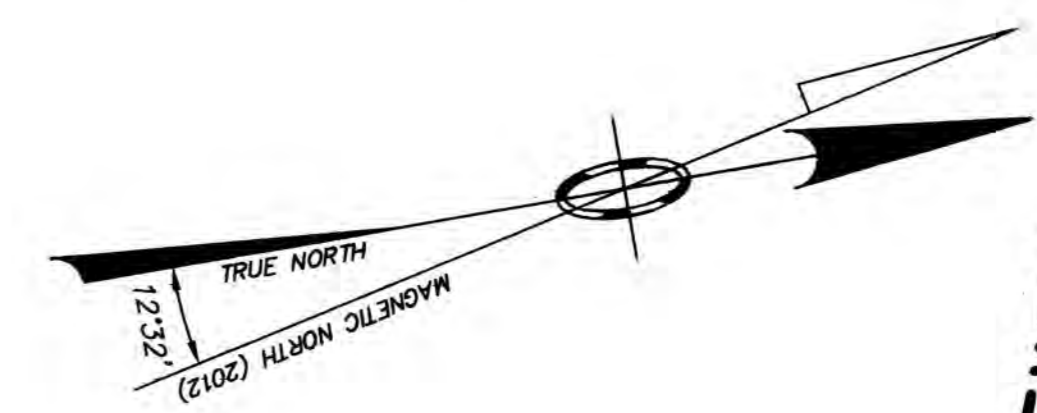
DATE: JAN 01 2013 SERIAL NO. 1017

THE AREAS, BOUNDARIES AND DIMENSIONS SHOWN ON THIS TAX MAP ARE DERIVED FROM GROUND SURVEYS, AERIAL SURVEYS AND RECORDED PLANS, MAPS, DEEDS AND WILLS AND ARE TO BE USED FOR ASSESSMENT PURPOSES ONLY.

THIS MAP HAS BEEN REDRAWN USING COMPUTER AIDED DRAFTING /DESIGN (CAD/D) BASED ON THE MAP PREPARED BY ROBERT McELDOWNEY Jr. PROFESSIONAL ENGINEER & LAND SURVEYOR DATED MARCH, 1982.

| REVISIONS | | |
|-----------|-----------------|----------|
| DATE | NAME | LIC. NO. |
| OCT. 2012 | CARL M. HERRMAN | GS42271 |
| | | |
| | | |
| | | |
| | | |
| | | |
| | | |
| | | |
| | | |

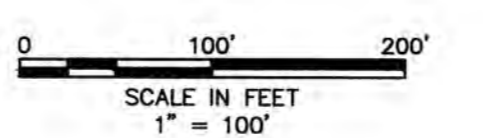
SHEET 7



THE AREAS, BOUNDARIES AND DIMENSIONS SHOWN ON THIS TAX MAP ARE DERIVED FROM GROUND SURVEYS, AERIAL SURVEYS AND RECORDED PLANS, MAPS, DEEDS AND WILLS AND ARE TO BE USED FOR ASSESSMENT PURPOSES ONLY.

THIS MAP HAS BEEN REDRAWN USING COMPUTER AIDED DRAFTING /DESIGN (CAD/D) BASED ON THE MAP PREPARED BY ROBERT McELDOWNEY JR. PROFESSIONAL ENGINEER & LAND SURVEYOR DATED MARCH, 1982.

NOTE:
 1. BLOCK 15 LOT 14 - THE OVERLAPPING LINES, GAPS AND DIMENSIONS SHOWN ARE PLOTTED IN ACCORDANCE WITH THE METES & BOUNDS DESCRIPTION APPEARING IN THE LAST DEED OF RECORD FOR THE PARCEL AND DOES NOT PURPORT TO REPRESENT TITLE OR OWNERSHIP STATUS IN ANY MANNER. THESE SITUATIONS ARE SUBJECT TO SOLUTION BY THE PROPERTY OWNERS CONCERNED.



NEW JERSEY DEPARTMENT OF THE TREASURY
 DIVISION OF TAXATION
 PROPERTY ADMINISTRATION TAX MAP SECTION
 APPROVED AS A TAX MAP PURSUANT TO THE AUTHORITY OF N.J.S.A.54:1-15 & N.J.S.A. 54:50-1 FOR THE DIRECTOR, DIVISION OF TAXATION

Sue Davison CTA Supervising Field Rep
 Sue Davison, CTA Supervising Field Rep

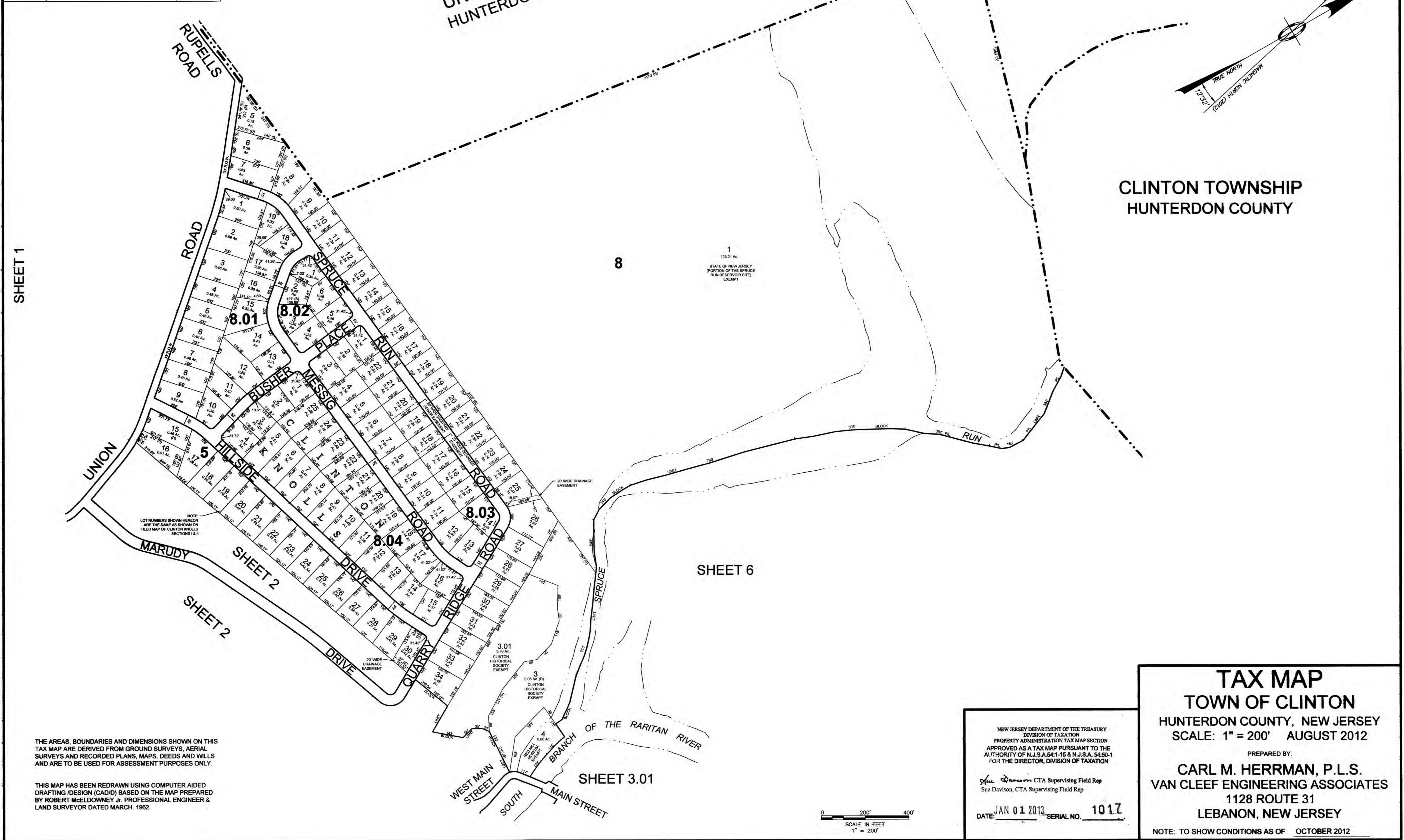
DATE: JAN 01 2013 SERIAL NO. 1017

TAX MAP
TOWN OF CLINTON
 HUNTERDON COUNTY, NEW JERSEY
 SCALE: 1" = 100' AUGUST 2012

PREPARED BY:
CARL M. HERRMAN, P.L.S.
VAN CLEEF ENGINEERING ASSOCIATES
 1128 ROUTE 31
 LEBANON, NEW JERSEY

NOTE: TO SHOW CONDITIONS AS OF OCTOBER 2012

| REVISIONS | | |
|-----------|-----------------|----------|
| DATE | NAME | LIC. NO. |
| OCT. 2012 | CARL M. HERRMAN | GS42271 |
| | | |
| | | |
| | | |
| | | |
| | | |
| | | |
| | | |



THE AREAS, BOUNDARIES AND DIMENSIONS SHOWN ON THIS TAX MAP ARE DERIVED FROM GROUND SURVEYS, AERIAL SURVEYS AND RECORDED PLANS, MAPS, DEEDS AND WILLS AND ARE TO BE USED FOR ASSESSMENT PURPOSES ONLY.

THIS MAP HAS BEEN REDRAWN USING COMPUTER AIDED DRAFTING DESIGN (CADD) BASED ON THE MAP PREPARED BY ROBERT McELDMONEY JR., PROFESSIONAL ENGINEER & LAND SURVEYOR DATED MARCH, 1982.

NOTE:
LOT NUMBERS SHOWN HEREON
ARE THE SAME AS SHOWN ON
FILED MAP OF CLINTON KNOLLS
SECTIONS 1 & 8

1
123.21 AC.
STATE OF NEW JERSEY
(PORTION OF THE SPRUCE
RUN RESERVOIR SITE)
EXEMPT

8

SHEET 6

SHEET 2

SHEET 2

SHEET 3.01

TAX MAP

TOWN OF CLINTON

HUNTERDON COUNTY, NEW JERSEY
SCALE: 1" = 200' AUGUST 2012

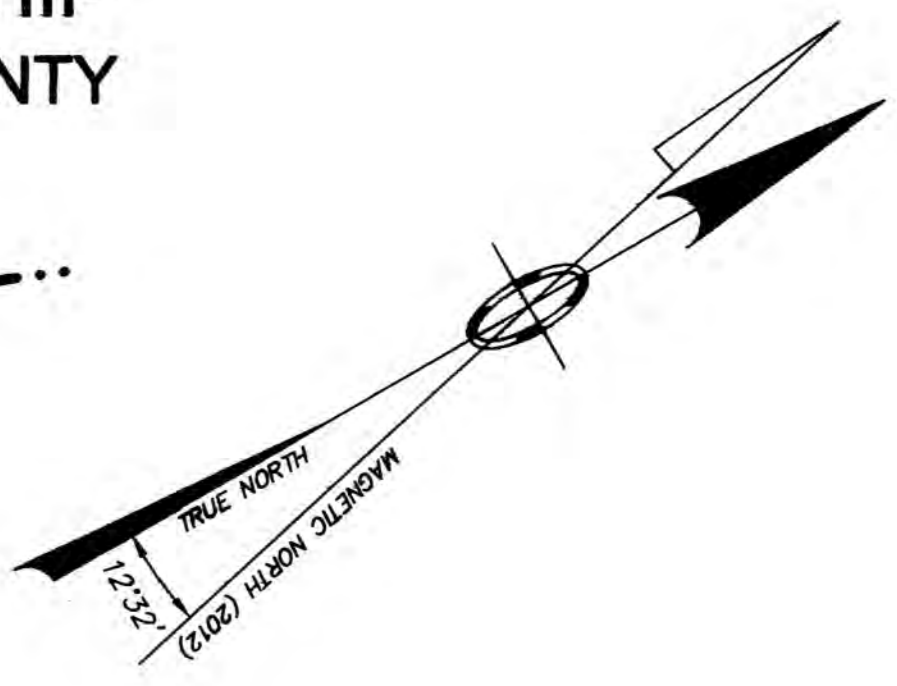
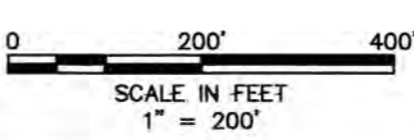
PREPARED BY:
CARL M. HERRMAN, P.L.S.
VAN CLEEF ENGINEERING ASSOCIATES
1128 ROUTE 31
LEBANON, NEW JERSEY

NOTE: TO SHOW CONDITIONS AS OF OCTOBER 2012

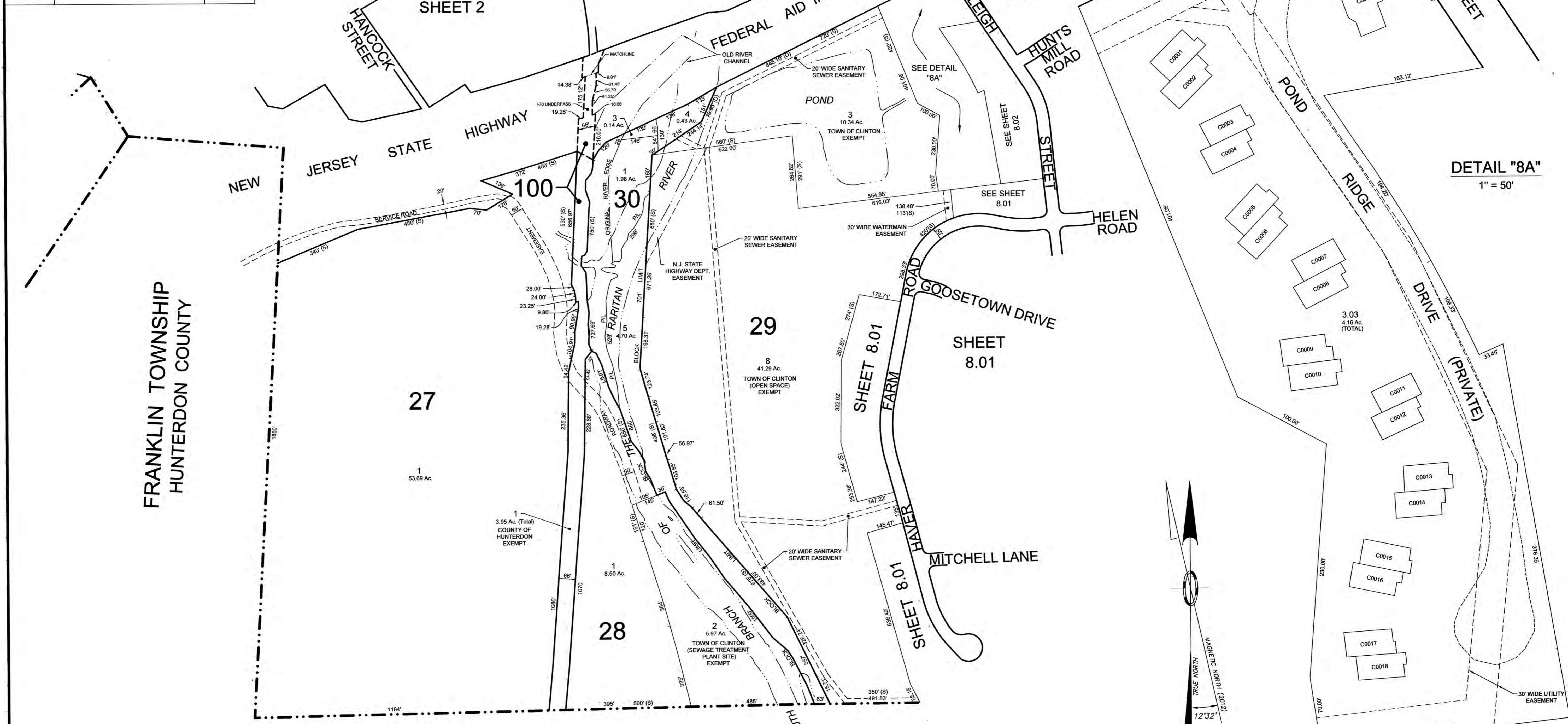
NEW JERSEY DEPARTMENT OF THE TREASURY
DIVISION OF TAXATION
PROPERTY ADMINISTRATION TAX MAP SECTION
APPROVED AS A TAX MAP PURSUANT TO THE
AUTHORITY OF N.J.S.A. 54:1-15 & N.J.S.A. 54:50-1
FOR THE DIRECTOR, DIVISION OF TAXATION

Sue Davison CTA Supervising Field Rep
Sue Davison, CTA Supervising Field Rep

DATE: JAN 01 2013 SERIAL NO. 1017



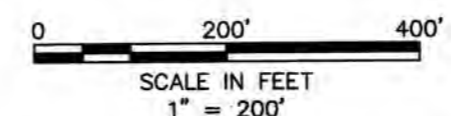
| REVISIONS | | |
|-----------|-----------------|----------|
| DATE | NAME | LIC. NO. |
| OCT. 2012 | CARL M. HERRMAN | GS42271 |
| | | |
| | | |
| | | |
| | | |
| | | |
| | | |
| | | |
| | | |
| | | |



DETAIL "8A"
1" = 50'

| BLOCK NUMBER | LOT NUMBER | QUALIFIER | UNIT NUMBER | SQ. FT. |
|--------------|------------|-----------|-------------|---------|
| 29 | 3.03 | C0001 | | 2138 |
| | | C0002 | | 2026 |
| | | C0003 | | 2126 |
| | | C0004 | | 2050 |
| | | C0005 | | 1910 |
| | | C0006 | | 2026 |
| | | C0007 | | 2138 |
| | | C0008 | | 2026 |
| | | C0009 | | 2026 |
| | | C0010 | | 2126 |
| | | C0011 | | 2144 |
| | | C0012 | | 2026 |
| | | C0013 | | 2128 |
| | | C0014 | | 2026 |
| | | C0015 | | 2116 |
| | | C0016 | | 2169 |
| | | C0017 | | 2187 |
| | | C0018 | | 2116 |
| | | C0019 | | 2048 |

**FRANKLIN TOWNSHIP
HUNTERDON COUNTY**



THE AREAS, BOUNDARIES AND DIMENSIONS SHOWN ON THIS TAX MAP ARE DERIVED FROM GROUND SURVEYS, AERIAL SURVEYS AND RECORDED PLANS, MAPS, DEEDS AND WILLS AND ARE TO BE USED FOR ASSESSMENT PURPOSES ONLY.

THIS MAP HAS BEEN REDRAWN USING COMPUTER AIDED DRAFTING /DESIGN (CAD/D) BASED ON THE MAP PREPARED BY ROBERT McELDOWNEY Jr. PROFESSIONAL ENGINEER & LAND SURVEYOR DATED MARCH, 1962.

NEW JERSEY DEPARTMENT OF THE TREASURY
DIVISION OF TAXATION
PROPERTY ADMINISTRATION TAX MAP SECTION
APPROVED AS A TAX MAP PURSUANT TO THE
AUTHORITY OF N.J.S.A. 54:1-15 & N.J.S.A. 54:50-1
FOR THE DIRECTOR, DIVISION OF TAXATION

Sue Davison CTA Supervising Field Rep
Sue Davison, CTA Supervising Field Rep

DATE: JAN 01 2013 SERIAL NO. 1017

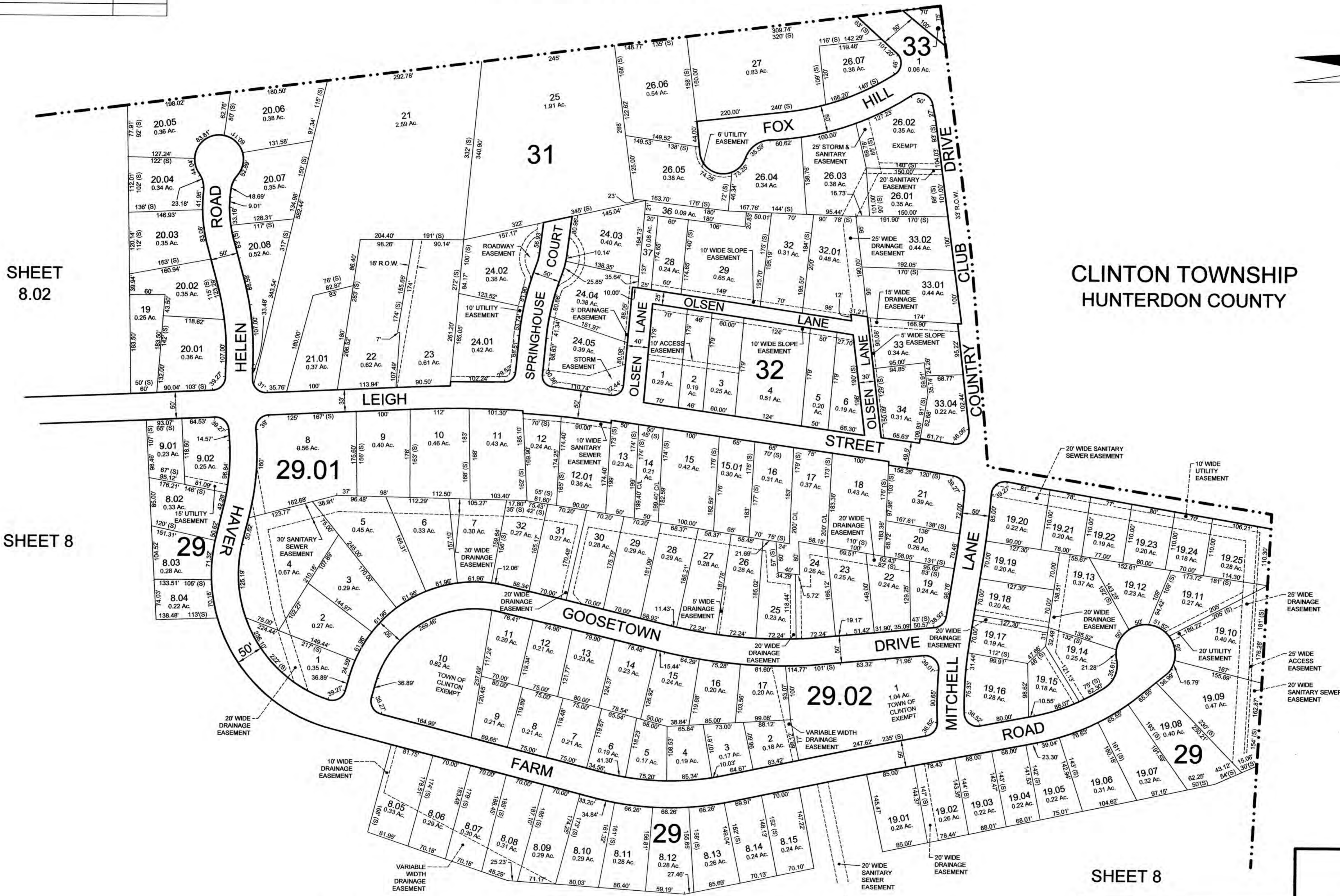
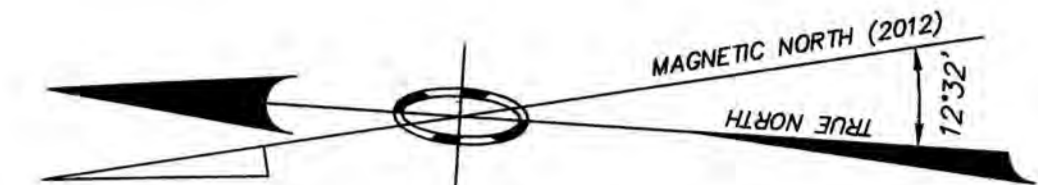
**TAX MAP
TOWN OF CLINTON**
HUNTERDON COUNTY, NEW JERSEY
SCALE: 1" = 200' AUGUST 2012

PREPARED BY:
CARL M. HERRMAN, P.L.S.
VAN CLEEF ENGINEERING ASSOCIATES
1128 ROUTE 31
LEBANON, NEW JERSEY

NOTE: TO SHOW CONDITIONS AS OF OCTOBER 2012

| REVISIONS | | |
|-----------|-----------------|----------|
| DATE | NAME | LIC. NO. |
| OCT. 2012 | CARL M. HERRMAN | GS42271 |
| | | |
| | | |
| | | |
| | | |
| | | |
| | | |
| | | |
| | | |

CLINTON TOWNSHIP
HUNTERDON COUNTY



SHEET
8.02

CLINTON TOWNSHIP
HUNTERDON COUNTY

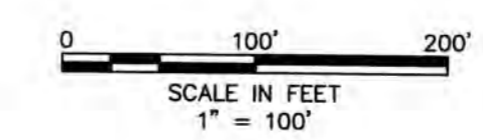
SHEET 8

SHEET 8

SHEET 8

THE AREAS, BOUNDARIES AND DIMENSIONS SHOWN ON THIS TAX MAP ARE DERIVED FROM GROUND SURVEYS, AERIAL SURVEYS AND RECORDED PLANS, MAPS, DEEDS AND WILLS AND ARE TO BE USED FOR ASSESSMENT PURPOSES ONLY.

THIS MAP HAS BEEN REDRAWN USING COMPUTER AIDED DRAFTING /DESIGN (CAD/D) BASED ON THE MAP PREPARED BY ROBERT McELDOWNY JR. PROFESSIONAL ENGINEER & LAND SURVEYOR DATED MARCH, 1962.



NEW JERSEY DEPARTMENT OF THE TREASURY
DIVISION OF TAXATION
PROPERTY ADMINISTRATION TAX MAP SECTION
APPROVED AS A TAX MAP PURSUANT TO THE AUTHORITY OF N.J.S.A. 54:1-15 & N.J.S.A. 54:50-1
THE DIRECTOR, DIVISION OF TAXATION

Prepared by:
Sue Davison CTA Supervising Field Rep
Sue Davison, CTA Supervising Field Rep

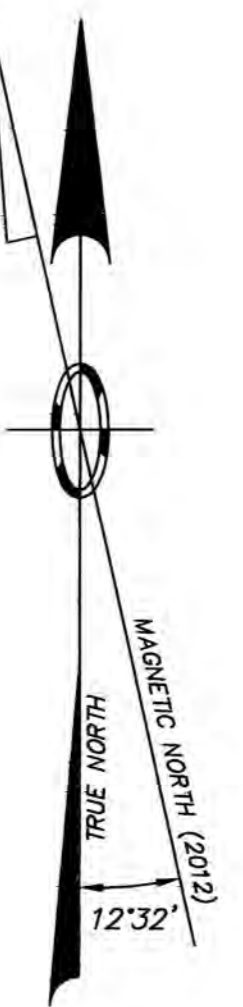
DATE: JAN 01 2013 SERIAL NO. 1017

TAX MAP
TOWN OF CLINTON
HUNTERDON COUNTY, NEW JERSEY
SCALE: 1" = 100' AUGUST 2012

PREPARED BY:
CARL M. HERRMAN, P.L.S.
VAN CLEEF ENGINEERING ASSOCIATES
1128 ROUTE 31
LEBANON, NEW JERSEY

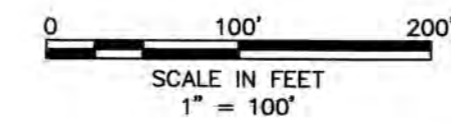
NOTE: TO SHOW CONDITIONS AS OF OCTOBER 2012

| REVISIONS | | |
|-----------|-----------------|----------|
| DATE | NAME | LIC. NO. |
| OCT. 2012 | CARL M. HERRMAN | GS42271 |
| | | |
| | | |
| | | |
| | | |
| | | |
| | | |



THE AREAS, BOUNDARIES AND DIMENSIONS SHOWN ON THIS TAX MAP ARE DERIVED FROM GROUND SURVEYS, AERIAL SURVEYS AND RECORDED PLANS, MAPS, DEEDS AND WILLS AND ARE TO BE USED FOR ASSESSMENT PURPOSES ONLY.

THIS MAP HAS BEEN REDRAWN USING COMPUTER AIDED DRAFTING (DESIGN (CAD/D) BASED ON THE MAP PREPARED BY ROBERT McELDOWNEY Jr. PROFESSIONAL ENGINEER & LAND SURVEYOR DATED MARCH, 1962.



NEW JERSEY DEPARTMENT OF THE TREASURY
DIVISION OF TAXATION
PROPERTY ADMINISTRATION TAX MAP SECTION
APPROVED AS A TAX MAP PURSUANT TO THE
AUTHORITY OF N.J.S.A. 54:1-15 & N.J.S.A. 54:50-1
FOR THE DIRECTOR, DIVISION OF TAXATION

Sue Davison CTA Supervising Field Rep
Sue Davison, CTA Supervising Field Rep

DATE: JAN 01 2013 SERIAL NO. 1017

TAX MAP
TOWN OF CLINTON
HUNTERDON COUNTY, NEW JERSEY
SCALE: 1" = 100' AUGUST 2012

PREPARED BY:
CARL M. HERRMAN, P.L.S.
VAN CLEEF ENGINEERING ASSOCIATES
1128 ROUTE 31
LEBANON, NEW JERSEY

NOTE: TO SHOW CONDITIONS AS OF OCTOBER 2012

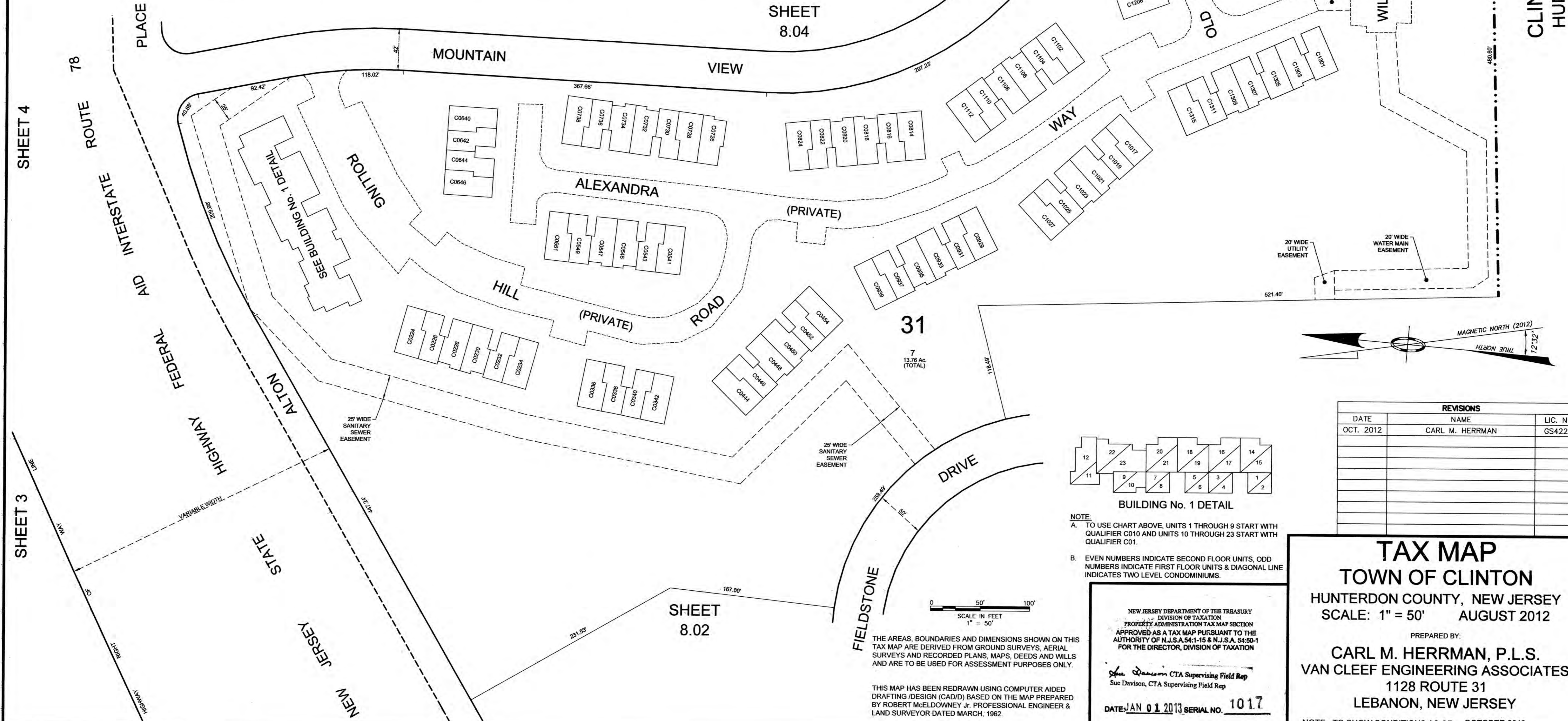
| BLOCK NUMBER | LOT NUMBER | QUALIFIER | UNIT NUMBER | SQ. FT. |
|--------------|------------|-----------|-------------|---------|
| 31 | 7 | C0101 | MTL | 645 |
| | | C0102 | MTL | 645 |
| | | C0103 | MTL | 645 |
| | | C0104 | MTL | 645 |
| | | C0105 | MTL | 645 |
| | | C0106 | MTL | 645 |
| | | C0107 | MTL | 645 |
| | | C0108 | MTL | 645 |
| | | C0109 | MTL | 942 |
| | | C0110 | MTL | 942 |
| | | C0111 | MTL | 1122 |
| | | C0112 | MTL | 1122 |
| | | C0114 | MTL | 942 |
| | | C0115 | MTL | 942 |
| | | C0116 | MTL | 942 |
| | | C0117 | MTL | 942 |
| | | C0118 | MTL | 942 |
| | | C0119 | MTL | 942 |
| | | C0120 | MTL | 942 |
| | | C0121 | MTL | 942 |
| | | C0122 | MTL | 1122 |
| | | C0123 | MTL | 1122 |
| | | C0224 | CWO | 1655 |
| C0226 | AWO | 1275 | | |
| C0228 | BWO | 1560 | | |
| C0230 | BWO | 1560 | | |
| C0232 | AWO | 1275 | | |
| C0234 | CWO | 1655 | | |
| C0336 | CWO | 1655 | | |

| BLOCK NUMBER | LOT NUMBER | QUALIFIER | UNIT NUMBER | SQ. FT. |
|--------------|------------|-----------|-------------|---------|
| 31 | 7 | C0338 | DWO | 1275 |
| | | C0340 | AWO | 1275 |
| | | C0342 | CWO | 1655 |
| | | C0444 | CWO | 1655 |
| | | C0446 | AWO | 1275 |
| | | C0448 | BWO | 1560 |
| | | C0450 | BWO | 1560 |
| | | C0452 | AWO | 1275 |
| | | C0454 | CWO | 1655 |
| | | C0541 | C | 1655 |
| | | C0543 | A | 1275 |
| | | C0545 | B | 1560 |
| | | C0547 | B | 1560 |
| | | C0549 | A | 1275 |
| | | C0551 | C | 1655 |
| | | C0560 | CWO | 1655 |
| | | C0642 | DWO | 1275 |
| | | C0644 | AWO | 1275 |
| | | C0646 | CWO | 1655 |
| | | C0728 | F | 1560 |
| | | C0728 | A | 1275 |
| | | C0730 | A | 1275 |
| | | C0732 | B | 1560 |
| C0734 | B | 1560 | | |
| C0736 | A | 1275 | | |
| C0738 | C | 1655 | | |
| C0814 | C | 1655 | | |
| C0816 | A | 1275 | | |
| C0818 | B | 1560 | | |

| BLOCK NUMBER | LOT NUMBER | QUALIFIER | UNIT NUMBER | SQ. FT. |
|--------------|------------|-----------|-------------|---------|
| 31 | 7 | C0820 | B | 1560 |
| | | C0822 | A | 1275 |
| | | C0824 | C | 1655 |
| | | C0828 | CWO | 1655 |
| | | C0931 | AWO | 1275 |
| | | C0933 | BWO | 1560 |
| | | C0935 | BWO | 1560 |
| | | C0937 | AWO | 1275 |
| | | C0939 | CWO | 1655 |
| | | C1017 | CWO | 1655 |
| | | C1019 | AWO | 1275 |
| | | C1021 | BWO | 1560 |
| | | C1023 | BWO | 1560 |
| | | C1025 | AWO | 1275 |
| | | C1027 | CWO | 1655 |
| | | C1102 | C | 1655 |
| | | C1104 | A | 1275 |
| | | C1106 | B | 1560 |
| | | C1108 | B | 1560 |
| | | C1110 | A | 1275 |
| | | C1112 | C | 1655 |
| | | C1202 | C | 1655 |
| | | C1204 | D | 1275 |
| | | C1206 | A | 1275 |
| | | C1208 | C | 1655 |
| | | C1301 | FWO | 1560 |
| | | C1303 | AWO | 1275 |
| | | C1305 | AWO | 1275 |
| | | C1307 | BWO | 1560 |

| BLOCK NUMBER | LOT NUMBER | QUALIFIER | UNIT NUMBER | SQ. FT. |
|--------------|------------|-----------|-------------|---------|
| 31 | 7 | C1309 | BWO | 1560 |
| | | C1311 | AWO | 1275 |
| | | C1315 | CWO | 1655 |
| | | C1401 | C | 1655 |
| | | C1403 | A | 1275 |
| | | C1405 | B | 1560 |
| | | C1407 | B | 1560 |
| | | C1409 | A | 1275 |
| | | C1411 | C | 1655 |

| BLOCK NUMBER | LOT NUMBER | QUALIFIER | UNIT NUMBER | SQ. FT. |
|--------------|------------|-----------|-------------|---------|
| 31 | 7 | C1501 | E | 1275 |
| | | C1503 | BWO | 1560 |
| | | C1505 | BWO | 1560 |
| | | C1507 | AWO | 1275 |
| | | C1509 | CWO | 1655 |
| | | C1602 | C | 1655 |
| | | C1604 | D | 1275 |
| | | C1608 | A | 1275 |
| C1608 | C | 1655 | | |



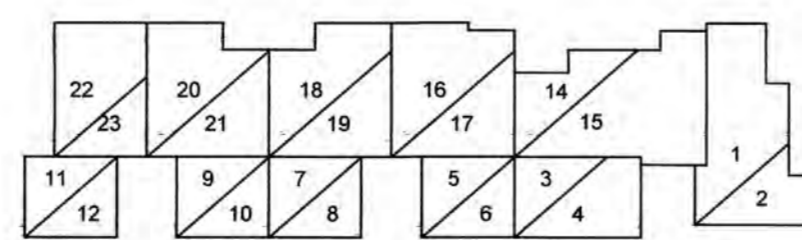
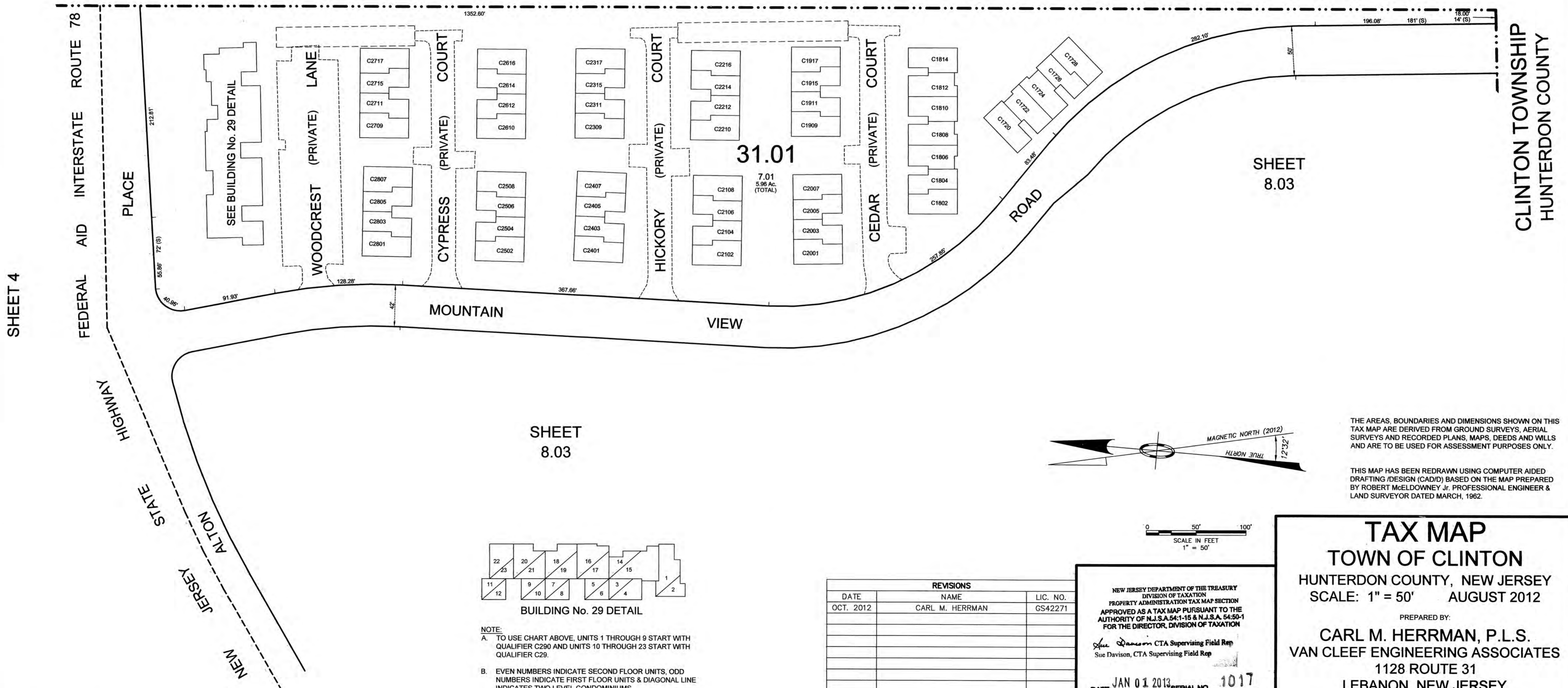
| BLOCK NUMBER | LOT NUMBER | QUALIFIER | UNIT NUMBER | SQ. FT. |
|--------------|------------|-----------|-------------|---------|
| 31.01 | 7.01 | C1720 | E | 1275 |
| | | C1722 | A | 1275 |
| | | C1724 | B | 1560 |
| | | C1726 | A | 1560 |
| | | C1728 | E | 1275 |
| | | C1802 | C | 1655 |
| | | C1804 | A | 1275 |
| | | C1806 | B | 1560 |
| | | C1808 | B | 1560 |
| | | C1810 | A | 1275 |
| | | C1812 | A | 1275 |
| | | C1814 | F | 1560 |
| | | C1909 | CWO | 1655 |
| | | C1911 | AWO | 1275 |
| | | C1915 | DWO | 1275 |
| | | C1917 | CWO | 1655 |
| | | C2001 | CWO | 1655 |
| | | C2003 | AWO | 1275 |
| | | C2005 | DWO | 1275 |
| | | C2007 | CWO | 1655 |
| | | C2102 | C | 1655 |
| | | C2104 | D | 1275 |
| | | C2106 | A | 1275 |
| C02108 | C | 1655 | | |

| BLOCK NUMBER | LOT NUMBER | QUALIFIER | UNIT NUMBER | SQ. FT. |
|--------------|------------|-----------|-------------|---------|
| 31.01 | 7.01 | C2210 | C | 1655 |
| | | C2212 | D | 1275 |
| | | C2214 | A | 1275 |
| | | C2216 | C | 1655 |
| | | C2309 | CWO | 1655 |
| | | C2311 | AWO | 1275 |
| | | C2315 | DWO | 1275 |
| | | C2317 | CWO | 1655 |
| | | C2401 | CWO | 1655 |
| | | C2403 | AWO | 1275 |
| | | C2405 | DWO | 1275 |
| | | C2407 | CWO | 1655 |
| | | C2502 | C | 1655 |
| | | C2504 | D | 1275 |
| | | C2506 | A | 1275 |
| | | C2508 | C | 1655 |
| | | C2610 | C | 1655 |
| | | C2612 | D | 1275 |
| | | C2614 | A | 1275 |
| | | C2616 | C | 1655 |
| | | C2709 | CWO | 1655 |
| | | C2711 | AWO | 1275 |
| | | C2715 | DWO | 1275 |
| C2717 | CWO | 1655 | | |

| BLOCK NUMBER | LOT NUMBER | QUALIFIER | UNIT NUMBER | SQ. FT. |
|--------------|------------|-----------|-------------|---------|
| 31.01 | 7.01 | C2801 | CWO | 1655 |
| | | C2803 | AWO | 1275 |
| | | C2805 | DWO | 1275 |
| | | C2807 | CWO | 1655 |
| | | C2901 | MTL | 645 |
| | | C2902 | MTL | 645 |
| | | C2903 | MTL | 645 |
| | | C2904 | MTL | 645 |
| | | C2905 | MTL | 645 |
| | | C2906 | MTL | 645 |
| | | C2907 | MTL | 645 |
| | | C2908 | MTL | 645 |
| | | C2909 | MTL | 645 |
| | | C2910 | MTL | 645 |
| | | C2911 | MTL | 645 |
| | | C2912 | MTL | 645 |
| | | C2914 | MTL | 645 |
| | | C2915 | MTL | 645 |
| | | C2916 | MTL | 645 |
| | | C2917 | MTL | 645 |
| | | C2918 | MTL | 645 |
| | | C2919 | MTL | 942 |
| | | C2920 | MTL | 942 |
| C2921 | MTL | 942 | | |

| BLOCK NUMBER | LOT NUMBER | QUALIFIER | UNIT NUMBER | SQ. FT. |
|--------------|------------|-----------|-------------|---------|
| 31.01 | 7.01 | C2922 | MTL | 645 |
| | | C2923 | MTL | 645 |

CLINTON TOWNSHIP
HUNTERDON COUNTY



NOTE:
A. TO USE CHART ABOVE, UNITS 1 THROUGH 9 START WITH QUALIFIER C290 AND UNITS 10 THROUGH 23 START WITH QUALIFIER C29.
B. EVEN NUMBERS INDICATE SECOND FLOOR UNITS, ODD NUMBERS INDICATE FIRST FLOOR UNITS & DIAGONAL LINE INDICATES TWO LEVEL CONDOMINIUMS.

| REVISIONS | | |
|-----------|-----------------|----------|
| DATE | NAME | LIC. NO. |
| OCT. 2012 | CARL M. HERRMAN | GS42271 |
| | | |
| | | |
| | | |
| | | |
| | | |
| | | |
| | | |
| | | |

NEW JERSEY DEPARTMENT OF THE TREASURY
DIVISION OF TAXATION
PROPERTY ADMINISTRATION TAX MAP SECTION
APPROVED AS A TAX MAP PURSUANT TO THE
AUTHORITY OF N.J.S.A. 54:1-15 & N.J.S.A. 54:50-1
FOR THE DIRECTOR, DIVISION OF TAXATION

Sue Davison CTA Supervising Field Rep
Sue Davison, CTA Supervising Field Rep

DATE: JAN 01 2013 SERIAL NO. 1017

TAX MAP
TOWN OF CLINTON
HUNTERDON COUNTY, NEW JERSEY
SCALE: 1" = 50' AUGUST 2012

PREPARED BY:
CARL M. HERRMAN, P.L.S.
VAN CLEEF ENGINEERING ASSOCIATES
1128 ROUTE 31
LEBANON, NEW JERSEY

NOTE: TO SHOW CONDITIONS AS OF OCTOBER 2012

SHEET 4

SHEET 8.03

SHEET 8.03

CLINTON TOWNSHIP
HUNTERDON COUNTY