

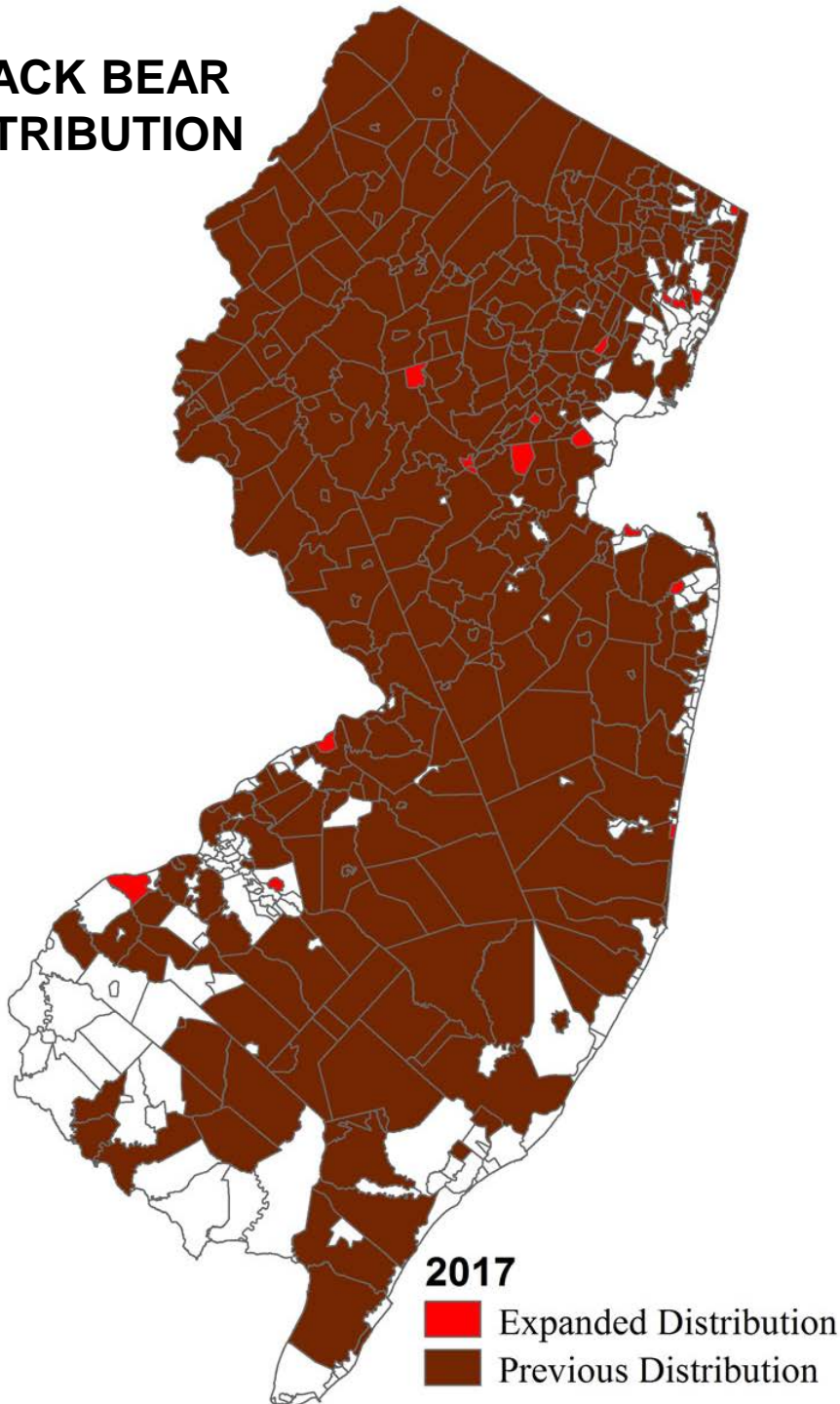
# KNOW THE BEAR FACTS



## BLACK BEARS IN NEW JERSEY




# BLACK BEAR DISTRIBUTION



**Black bears are  
found primarily in  
Sussex, Warren,  
Morris and Passaic  
Counties**

*BLACK BEARS  
HAVE BEEN  
SIGHTED IN ALL  
21 COUNTIES*

# Black Bear Biology

A black bear is seen in a forest setting, partially obscured by tree trunks and fallen leaves. The bear is dark in color and appears to be looking towards the camera. The background is filled with trees and a ground covered in brown leaves, suggesting an autumn or winter environment.

American Black Bear  
(*Ursus americanus*)

New Jersey's largest land mammal



**Bears live in  
hardwood forests,  
dense swamps and  
forested wetlands**



**Black bears naturally eat nuts, berries, fruit, insects, small mammals and carrion**

## **ADULT MALES**

**Average weight  
is 396 pounds**

**Range is  
150 - 700+ lbs**

## **ADULT FEMALES**

**Average weight  
is 185 pounds**

**Range is  
150 - 500+ lbs**





# **BLACK BEARS**

---

**Excellent senses of  
smell and hearing**

**Excellent climbers**

**Strong swimmers**

**Can run up to  
35 miles per hour**

**Can live for 25 years**





# Black Bear Signs



# Bears enter dens late October to December



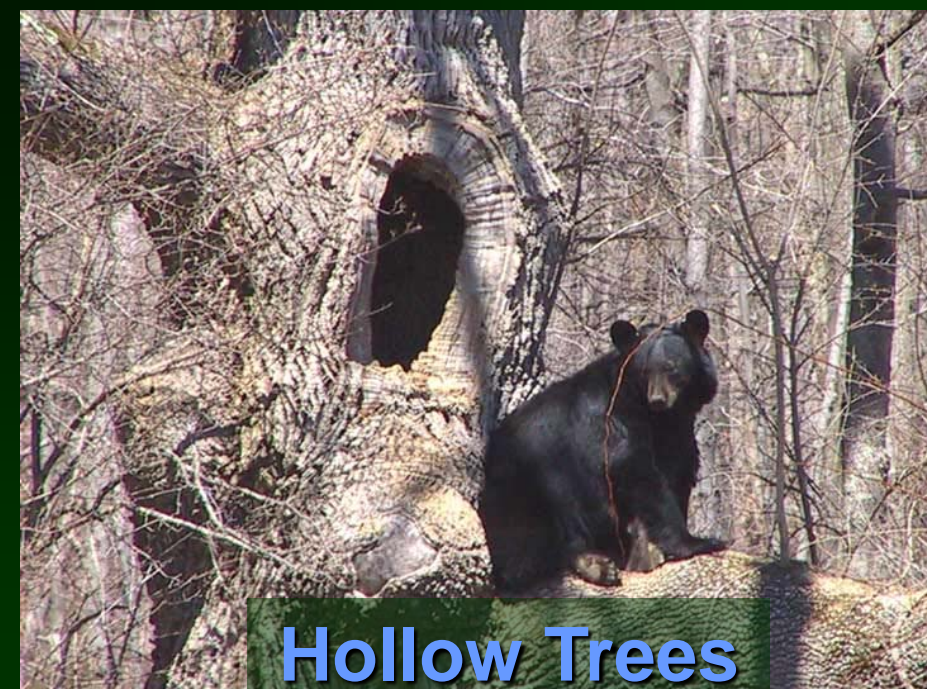
**Rock Cavities**



**Ground Nests**



**Excavations**



**Hollow Trees**

# Under Buildings



**Black bears are not true hibernators**



**Cubs are  
born in  
January  
and weigh  
8-16  
ounces**



**By March  
a cub's  
average  
weight is  
5 pounds**



**The average  
litter size is  
3.0 Cubs**

**New Jersey's  
bears have  
1 to 6 cubs per litter  
every other year**





# NJ Black Bear Research

- Division staff have been studying black bears in New Jersey since 1980
- Ernest Thomas Seton Award (AFWA Excellence Award)
- Research Trapping & Tagging
- Reproduction & Recruitment (Den Work)
- Radio Telemetry (Home-Ranges, Habitat Use)
- Cooperative Research Institutions:  
East Stroudsburg, Rutgers, Montclair State University

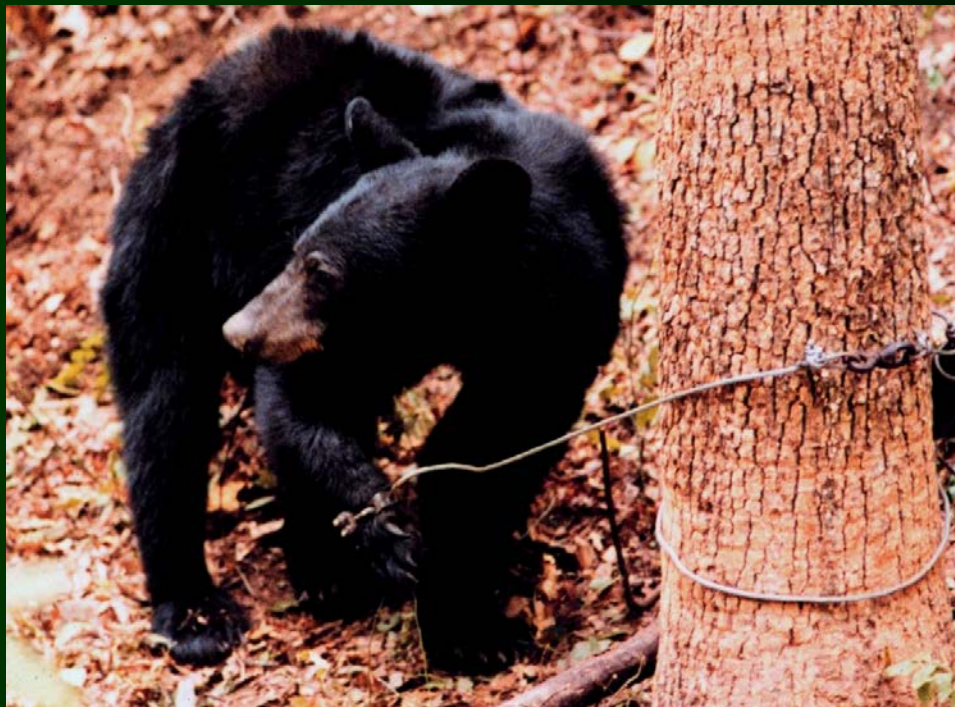




A black bear is sitting on the forest floor, leaning against a tree trunk. The forest is dense with green foliage and brown leaves on the ground. The bear is looking towards the camera.

# Research Trapping

Population Monitoring  
Fall and Spring



**Snares  
and  
Culvert Traps  
are baited with  
bacon and  
sweet scents**



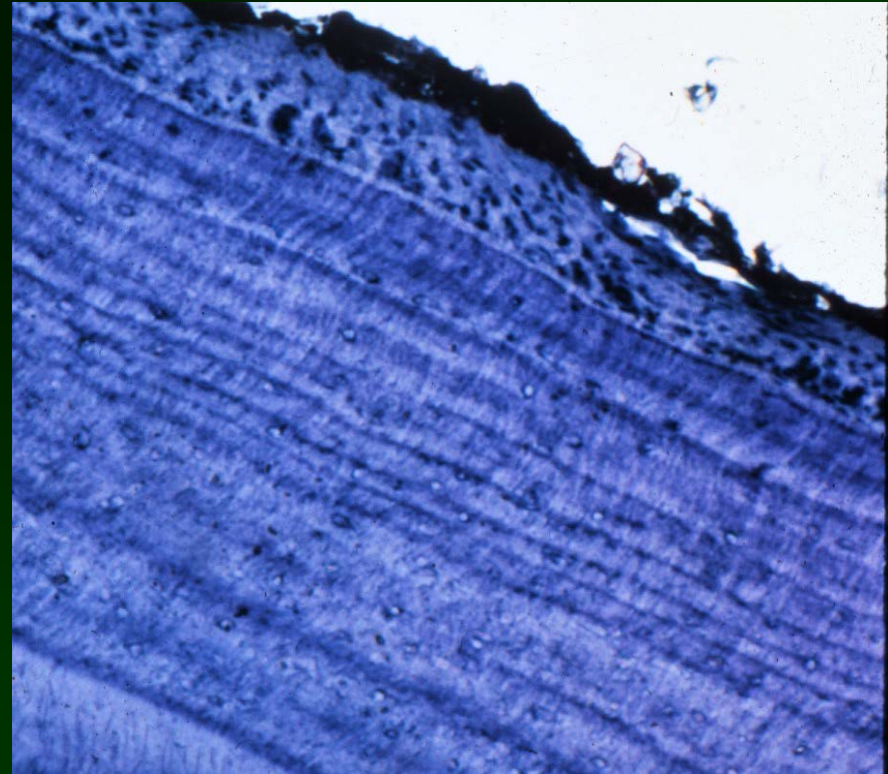
**Bears are tagged  
on both ears  
and  
inside upper lip**

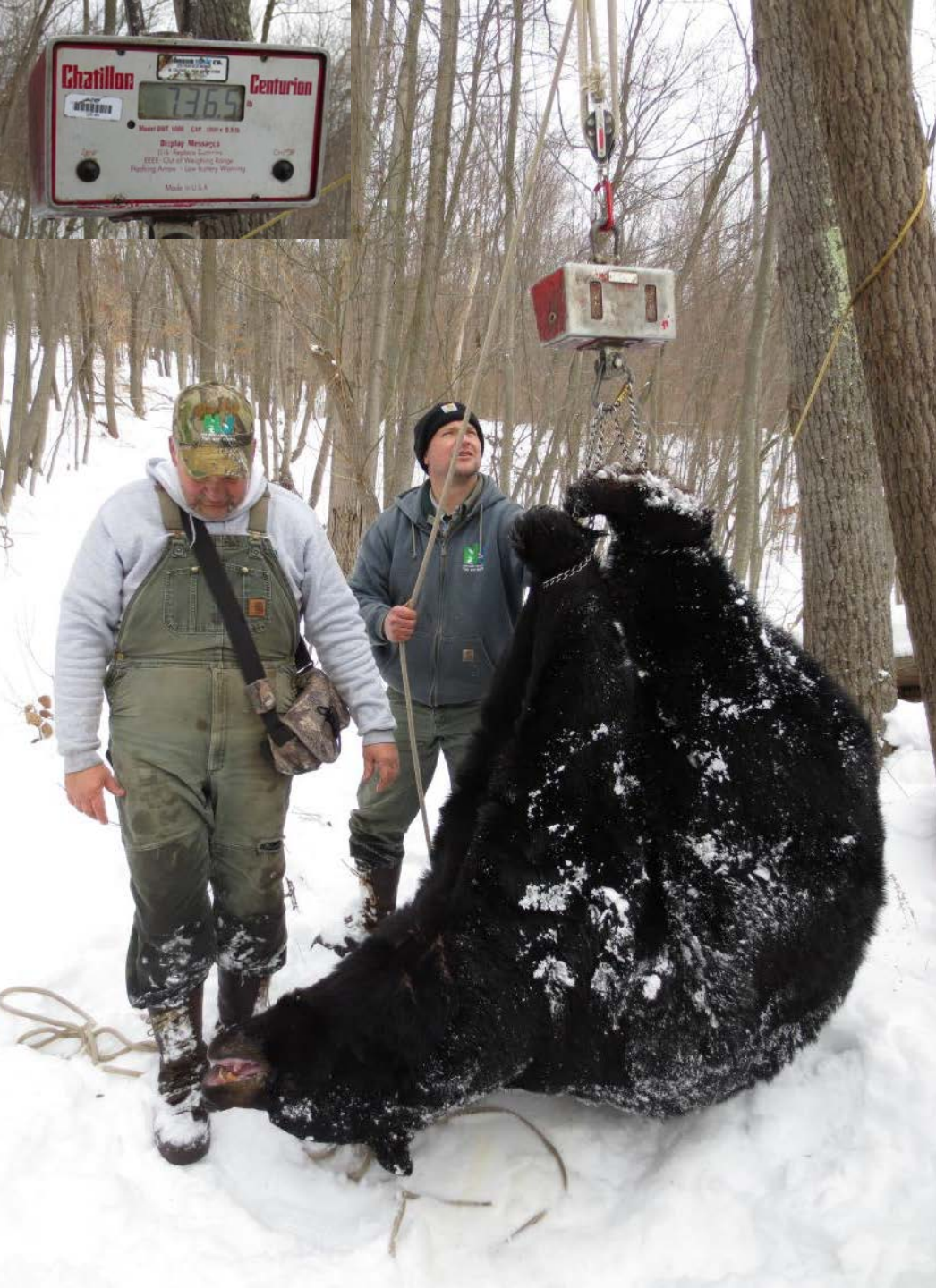




**A tooth is pulled to determine the age of a bear**

**Blood and tissue samples are collected**





**Bears are also weighed and measured**

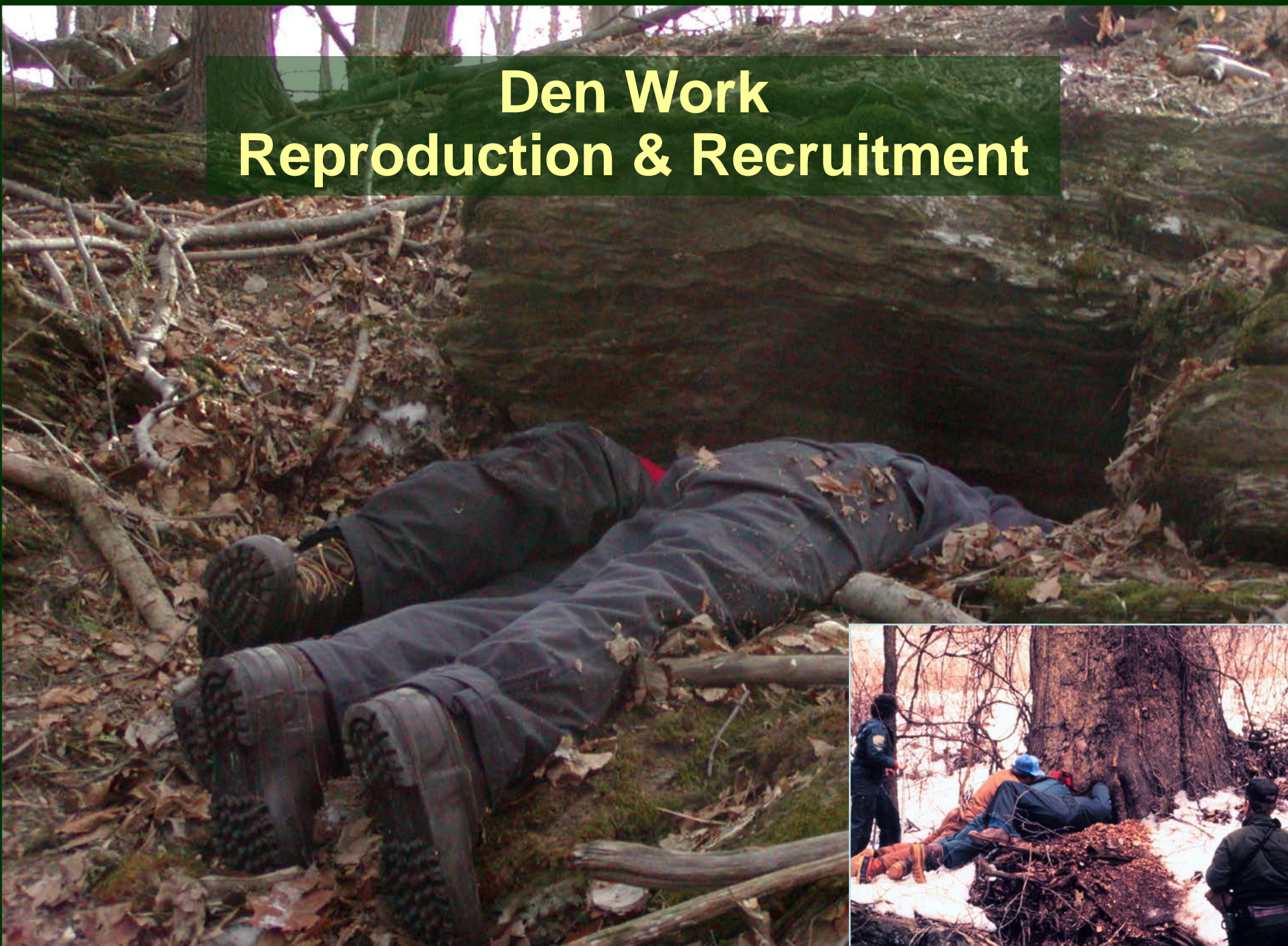
# Radio Telemetry



**Sows are  
radio-collared  
to gather  
information on  
reproduction,  
home range  
and habitat use**



# Den Work Reproduction & Recruitment





**Cubs are tagged,  
weighed and  
measured**

**Radio-collars on  
sows might be  
changed**

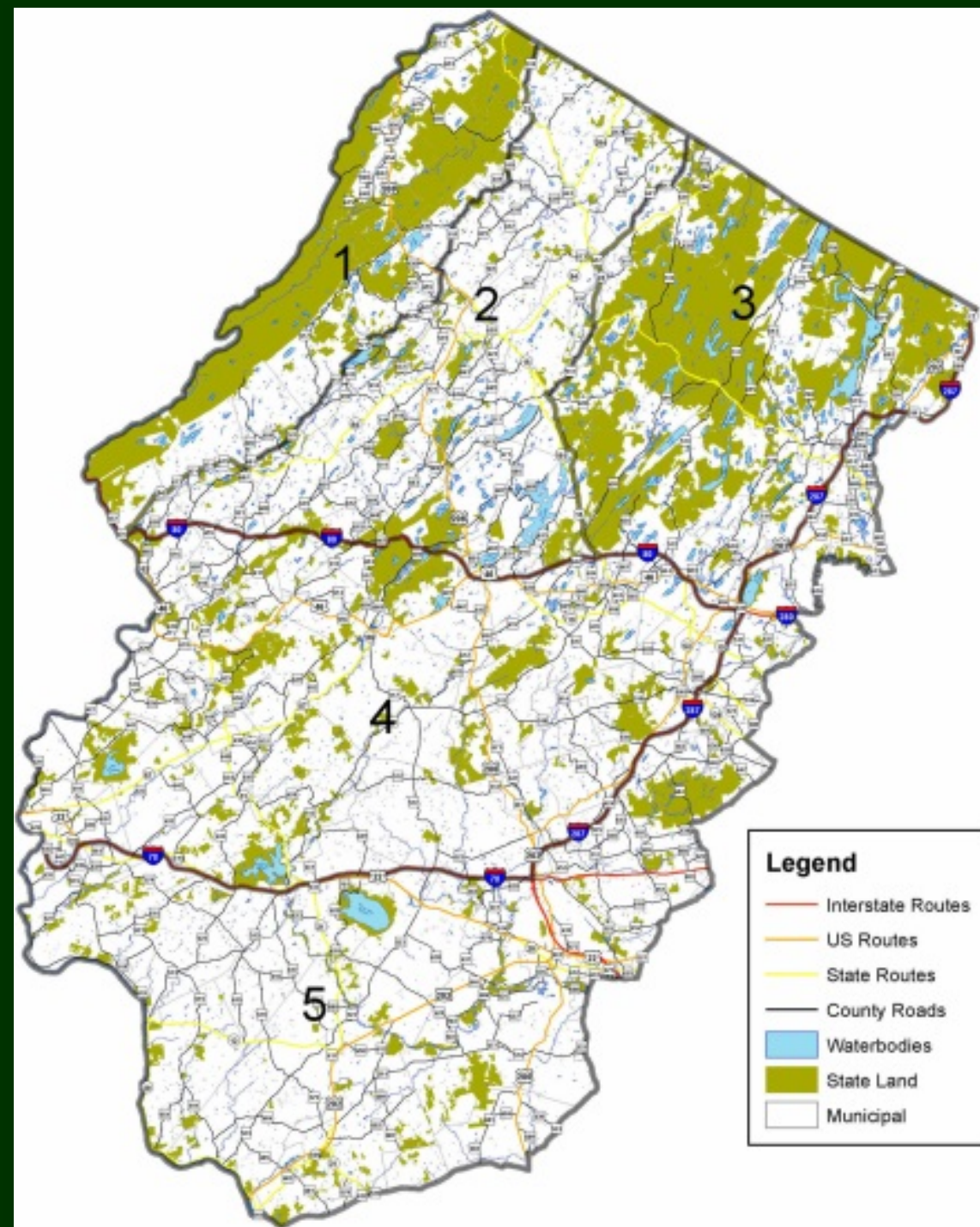




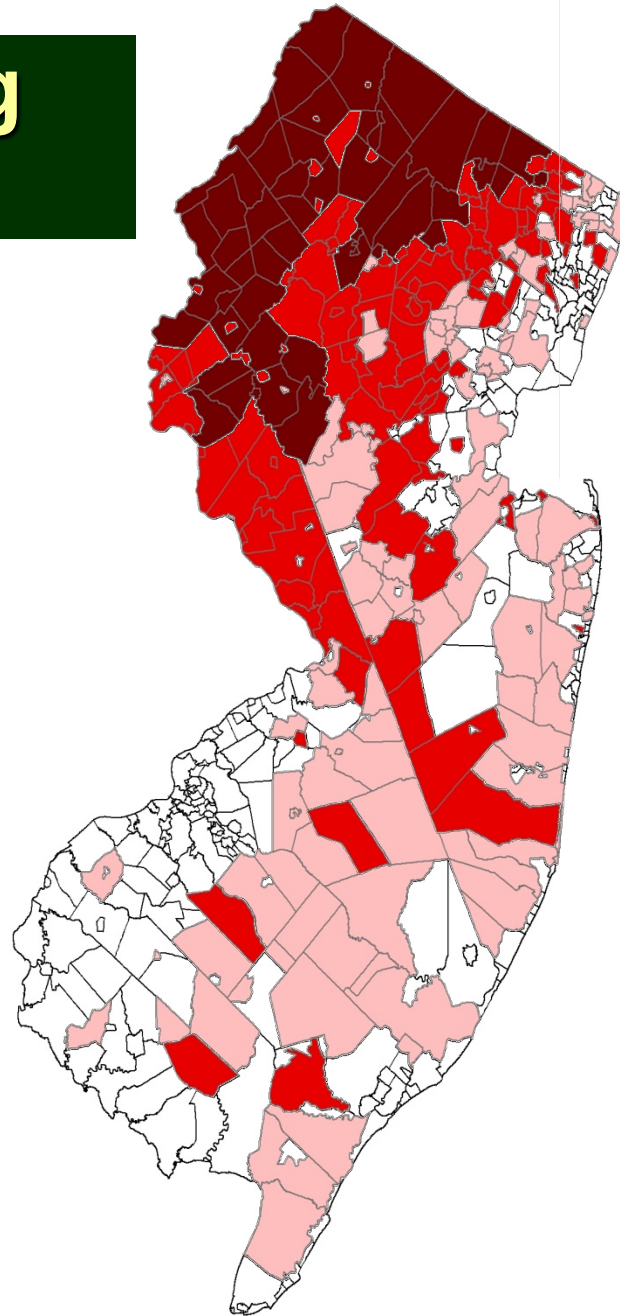
**As of 2017**

**Black bear  
population  
in study  
area was  
estimated:**

**2,510 bears**



# Expanding Range



**Sightings Reported  
in 1995**

**Sightings Reported  
1996-2000**

**Sightings reported  
2001-2008**

# Habituation

A black bear is seen from a side profile, looking out from a wooden enclosure. The bear's head is resting on a wooden ledge, and its body is partially visible behind the wooden posts. The enclosure is made of light-colored wood. The background shows a blurred outdoor setting with trees and a sky.

**Many residents feel the need to feed wildlife**



**Which Leads To...**



**Which Leads To:**

**Habituation**







**Feeding bears intentionally or unintentionally creates problems and is illegal in New Jersey**



# Protection and Control Measures

## CATEGORY SYSTEM

**Category III:** Bears exhibit normal behavior and are not a nuisance or threat to public safety.

**Category II:** Nuisance bears which are not a threat to public safety or property.

**Category I:** Bears which are a threat to public safety and property.

# Category III Black Bears

May include urban or dispersing black bears

# BIRD FEEDERS



# Category II Black Bears



## GARBAGE #1 Problem in Garden State





**Avoid  
attracting bears  
with  
garbage!**







**PROPERTY  
DAMAGE  
LESS THAN  
\$1,000**

- **Unprotected Livestock**
- **Unprotected Hive**
- **Provoked Dog Attack**



# Aversive Conditioning

## Category II Response



**Control measures include  
rubber buckshot, pyrotechnic charges  
and black mouth yellow curs**



# Cyngen, Shawnee Lucy, Copper



# Category I Black Bears

## HOME ENTRY





**VEHICLE ENTRY**

**TENT ENTRY**



## CROP DAMAGE



## LIVESTOCK ATTACK

(Protected)



## RABBIT ATTACK

(Protected)

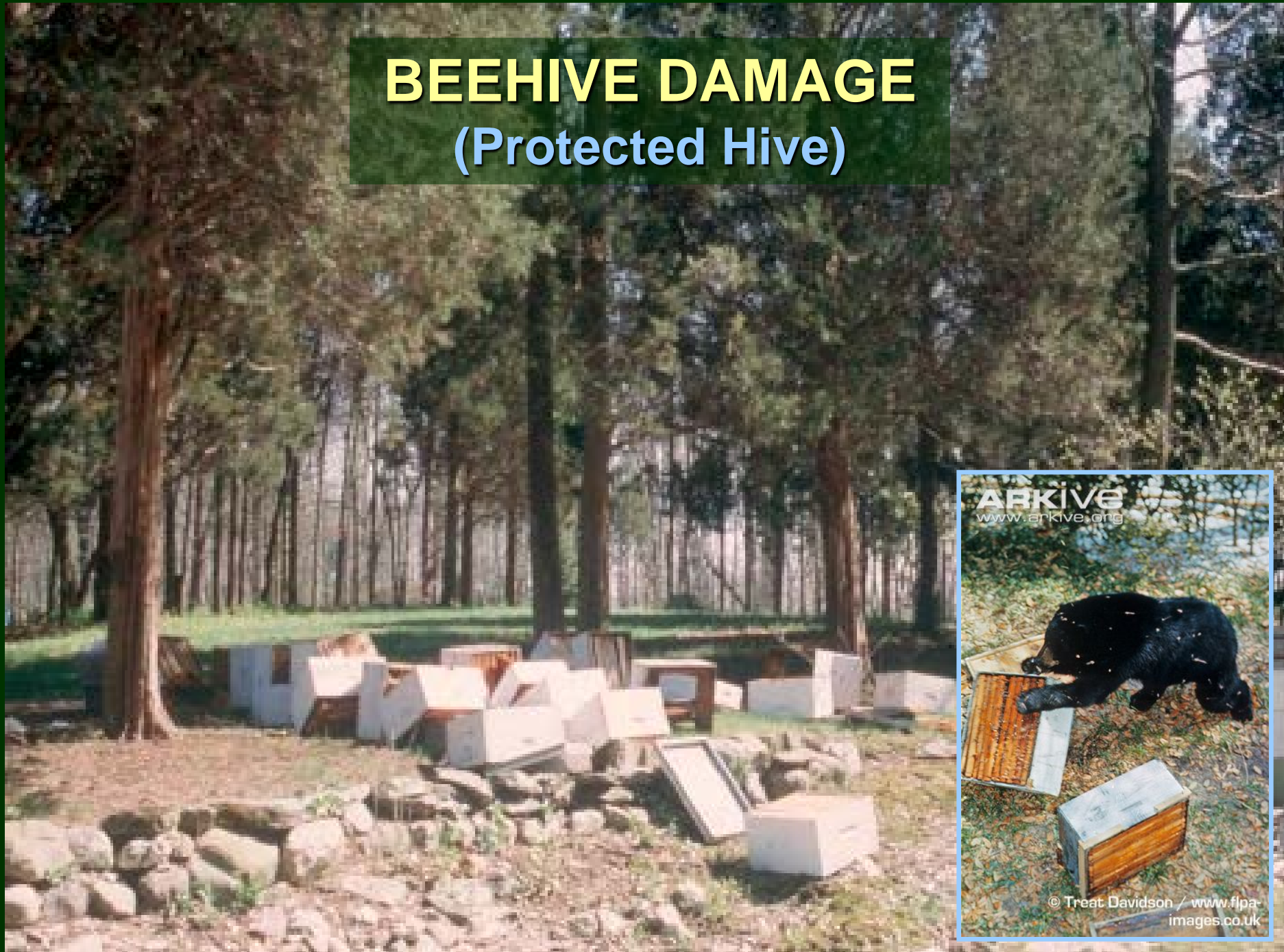


## DOG ATTACK

(Unprovoked)



# BEEHIVE DAMAGE (Protected Hive)




ARKIVE  
www.arkive.org

© Treat Davidson / www.flpa-images.co.uk



**SIGNIFICANT  
PROPERTY  
DAMAGE  
OVER \$1,000**

# HUMAN ATTACK

A man with dark hair and a mustache is shown from the chest up. He is wearing a light-colored, short-sleeved t-shirt that is heavily stained with blood. The stains are most prominent on the chest and the right sleeve. He has a serious expression and is looking slightly to the left. The background is dark and out of focus, showing what appears to be a car and some foliage. The overall scene suggests a violent incident.

**Black Bears are Typically Not Aggressive**

# RESPONSIBILITIES OF RESIDENTS







**SECURE GARBAGE!**  
**Store garbage in certified bear-resistant  
containers or dumpsters**

# Certified Bear-Resistant Containers

Pass a formal testing procedure by:

*Interagency Grizzly Bear Committee  
and the  
U.S. Forest Service*



**Captive grizzlies in Montana  
used to test commercial and  
residential food and refuse  
storage containers.**

**[www.igbconline.org](http://www.igbconline.org)**



# List of Bear Resistant Container Suppliers

[www.njfishandwildlife.com](http://www.njfishandwildlife.com)





- Wash containers weekly with disinfectant solution

- Place rags soaked in bleach on trash bags inside container

- Place all trash inside of container





- **Store airtight containers within a secure building or suitable enclosure\***

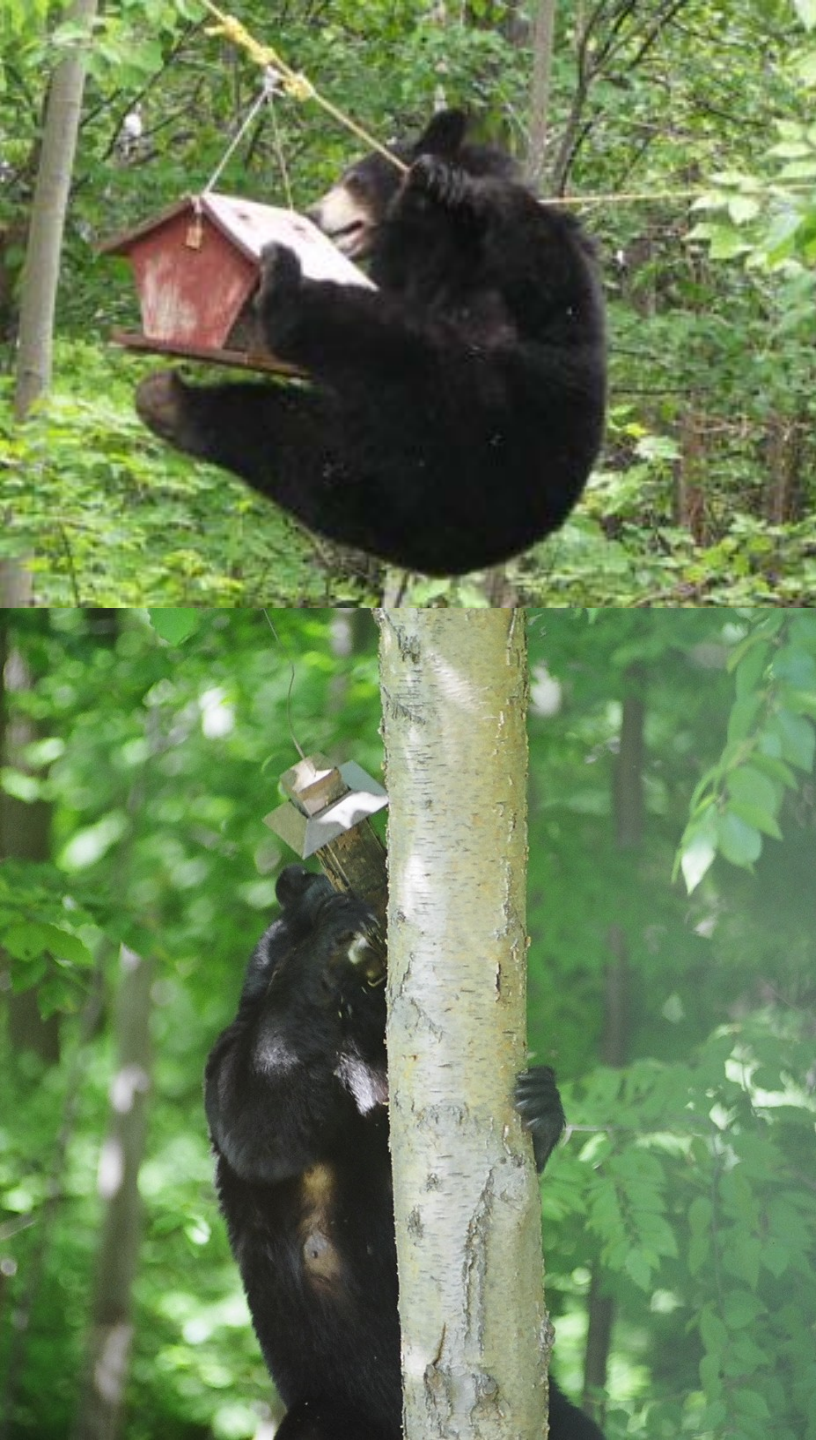
- **Certified containers can be left outdoors**

- **Put garbage and recycling out on collection day, not the night before**

# BIRD FEEDERS



**Avoid feeding birds**



- **Feed birds only from December 1 to April 1**
- **Hang feeders at least 10+ feet off ground and away from limbs & trunk, not off the house**
- **Use spill pans and clean spilled seeds and shells daily**
- **Bring feeders indoors at night**



**Protect beehives,  
rabbit hutches and  
livestock with  
electric fencing**

**Compost vegetable  
matter only**

**Meat, dairy and  
sweet foods  
attract bears**







**Immediately clean up after pets  
Pick up food scraps and bring bowls indoors**

# Clean outdoor grills and utensils thoroughly



**Grease and food residue attracts bears**

# VEHICLE STRIKES



# **GARBAGE MANAGEMENT ORDINANCE**

**Unless ALL trash in a residential environment is secured from bear access, bears will become trash-habituated.**

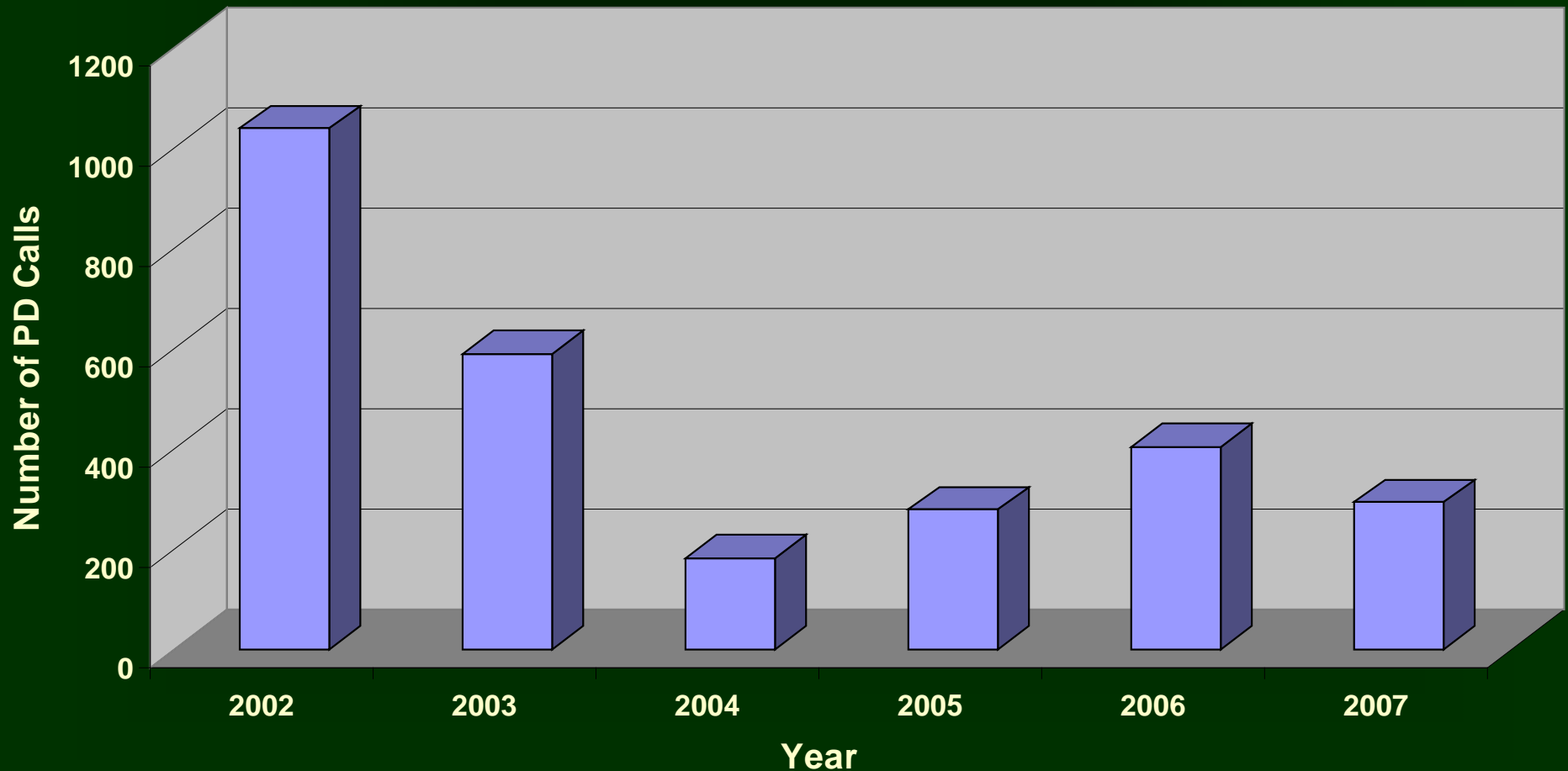
**Garbage Management Ordinances address and regulate waste disposal protocols through partnerships.**

**Eagle County, Colorado  
Durango, Colorado  
Juneau, Alaska  
State of Alaska**

**Province of British Columbia's Wildlife Act**

# Local ordinances mandate the use & enforcement of certified bear-resistant containers/enclosures throughout a community.

Juneau Ordinance



# IF YOU ENCOUNTER A BEAR...



**Remain calm.  
Leave an escape route  
for the bear.**

---

**Talk and clap your hands  
to make it aware of you.**

---

**Scare it away by making  
loud noises.**

---

**Avoid eye contact.  
Back away slowly.**

---

**If the bear does not leave,  
move to a secure area.**

---

**Do not run or play dead.**

# The Future of Black Bears in New Jersey



**THANK YOU!**

**For more  
information on  
black bears in  
New Jersey visit:**

**[www.NJFishandWildlife.com](http://www.NJFishandWildlife.com)**



**Michelle.Ruggiero@dep.state.nj.us  
908-637-4125**